

COUNTRY RISK SUMMARIES

Powered by FocusPoint International, Inc.

Report for the week ending January 26th, 2025.

Latest Updates: Afghanistan, Bangladesh, Burkina Faso, Burma (Myanmar), Chad, Ecuador, Egypt, Haiti, India, Iran, Israel, Libya, Mexico, Niger, Pakistan, Philippines, Russia, Somalia, South Sudan, Sudan, Syria, Turkey, Venezuela

- **Afghanistan:** On January 21, IS gunmen killed a Chinese national in Dasht Qala district, Takhar.
- **Bangladesh:** On January 22, injuries were reported from clashes between BNP factions in Bhurungamari upazila, Rangpur.
- **Burkina Faso:** On January 22, deadly JNM targeted the military base in Sebba, Sahel.
- **Burma (Myanmar):** On January 20, authorities partially opened the border between Shan state in Myanmar and Yunnan province in China.
- **Burma (Myanmar):** On January 20, clashes between Burmese military and AA militia took place in Pathein township, Ayeyarwady.
- **Burma (Myanmar):** On January 21, deadly airstrikes targeted civilians in Nawngkhio, Shan.
- **Chad:** On January 20, Petro declares emergency over clashes in Norte de Santander.
- **Chad:** On January 21, clashes erupted between ELN and ex-FARC dissidents in Cauca department.
- **Ecuador:** On January 20, deadly shooting reported in central Quito.



- **Egypt**: On January 20, IDF designated Nitzana border crossing with Egypt closed military zone until January 26.
- **Haiti**: On January 20, gunmen attacked the consulate and embassy convoys in Port-au-Prince.
- **Haiti**: On January 20, protest clashes erupted in Lascahobas, Centre department.
- **India**: On January 20, protest reported outside court in Kolkata ahead of verdict.
- **India**: On January 20, vandalism triggered curfew in Mawkynrew, Meghalaya.
- **India**: On January 21, shutdown strike triggered disruptions in Bargarh district, Odisha.
- **India**: On January 22, authorities declared containment zone due to unknown illness in Rajouri, Jammu and Kashmir.
- **India**: On January 22, fatalities reported after a train hit people on the tracks in Jalgaon district, Maharashtra.
- **India**: On January 22, security forces targeted Maoist rebels in Bokaro district, Jharkland.
- **India**: On January 23, unionised doctors to initiate strikes in Punjab.
- **Iran**: Kurdish groups begin general strike in West Azerbaijan and other provinces.
- **Israel**: On January 20, heavy gunfire reported in Khan Younis governorate, Gaza strip.
- **Israel**: On January 20, IDF designated Nitzana border crossing with Egypt closed military zone until January 26.
- **Israel**: On January 21, injuries were reported following a stabbing attack in Tel Aviv.
- **Israel**: On January 21. Clashes reported during protest in Jerusalem.
- **Israel**: On January 22, protesters blocked traffic in Rosh HaAyin, Central District.

866-340-8569



info@wwfocus.com



www.focuspointintl.com



- **Libya**: On January 22, armed clashes commence in al-Seyaheyya, Tripoli.
- **Libya**: On January 22, authorities deployed security forces amid armed clashes in Tripoli.
- **Mexico**: On January 21, shooting caused casualties in Morelos neighbourhood, Mexico City.
- **Mexico**: On January 21, clashes reported in Culiacán, Sinaloa.
- **Mexico**: On January 23, protestors stormed Government Palace in Culiacán, Sinaloa.
- **Niger**: On January 20, deadly cattle raid reported in Birni-N'Konni department, Tahoua.
- **Pakistan**: On January 22, heavy snowfall disrupted traffic in parts of Gilgit-Baltistan.
- **Pakistan**: On January 23, attacks targeted police post in South Waziristan, Khyber Pakhtunkhwa.
- **Philippines**: On January 22, suspected militants ambushed soldiers in Lower Cabengbeng, Basilan.
- **Russia**: On January 20, explosions heard in Kazan, Republic of Tatarstan amid drone attacks.
- **Russia**: On January 20, drone attacks disrupted at Kazan International Airport and other airports.
- **Somalia**: On January 22, Somali airlines flights suspended indefinitely.
- **South Sudan**: On January 22, security operations are underway after mass prison breaks in Juba.
- **South Sudan**: On January 23, authorities issued a temporary social media ban.

866-340-8569



info@wwfocus.com



www.focuspointintl.com



- **Sudan**: On January 23, SAF and RSF militia commenced clashes in Khartoum and North Darfur states.
- **Syria**: On January 21, deadly grenade attack targeted security checkpoint in Jablah, Latakia governorate.
- **Turkey**: On January 21, fatalities mount following a fire at Kartalkaya Ski Center, Bolu.
- **Venezuela**: On January 21, power and water outages continue at the Embassy of Argentina in Caracas.

Please be aware System Risk Management has asked all members to prohibit travel to extreme risk countries and regions. Please reference memorandum from the Chancellor regarding procedures relating to international travel to be followed by all System members found at this link:

<http://www.tamus.edu/assets/files/safety/pdf/InternationalTraveltoHighRiskCountries.pdf>

Should you have any questions, please get in touch with me directly. Thank you.

Charles A. Longoria, CRM | Director
System Risk Management

Clongoria@tamus.edu 1262 TAMU | College Station, TX 77840-7896
Tel. 979.458.6237 | Cell 956.522.2881 | Fax 979.458.6247 | www.tamus.edu

866-340-8569



info@wwfocus.com



www.focuspointintl.com



COUNTRY TRAVEL ADVISORY LIST

Any travel to the below listed Extreme Risk countries or countries with an Extreme Risk region requires an International Travel Questionnaire submission to System Risk Management for review.



EXTREME RISK COUNTRIES

- | | |
|-----------------------------------|-----------------|
| 1) Afghanistan | 12) Libya |
| 2) Bangladesh | 13) Mali |
| 3) Belarus | 14) North Korea |
| 4) Burkina Faso | 15) Russia |
| 5) Burma (Myanmar) | 16) Somalia |
| 6) Central African Republic (CAR) | 17) South Sudan |
| 7) Haiti | 18) Sudan |
| 8) Iran | 19) Syria |
| 9) Iraq | 20) Ukraine |
| 10) Israel | 21) Venezuela |
| 11) Lebanon | 22) Yemen |



HIGH RISK COUNTRIES

- | | |
|---|----------------------|
| 1) Algeria | 14) Honduras |
| 2) Azerbaijan | 15) India |
| 3) Burundi | 16) Kenya |
| 4) Cameroon | 17) Mauritania |
| 5) Chad | 18) Mexico |
| 6) Colombia | 19) Niger |
| 7) Congo (Republic of) | 20) Nigeria |
| 8) Cuba | 21) Pakistan |
| 9) Democratic Republic of the Congo (DRC) | 22) Panama |
| 10) Ecuador | 23) Papua New Guinea |
| 11) Egypt | 24) Philippines |
| 12) Eritrea | 25) Saudi Arabia |
| 13) Ethiopia | 26) Tunisia |
| | 27) Turkey |

866-340-8569



info@wwfocus.com



www.focuspointintl.com



COUNTRY TRAVEL ADVISORY DETAILS BY RISK LEVEL

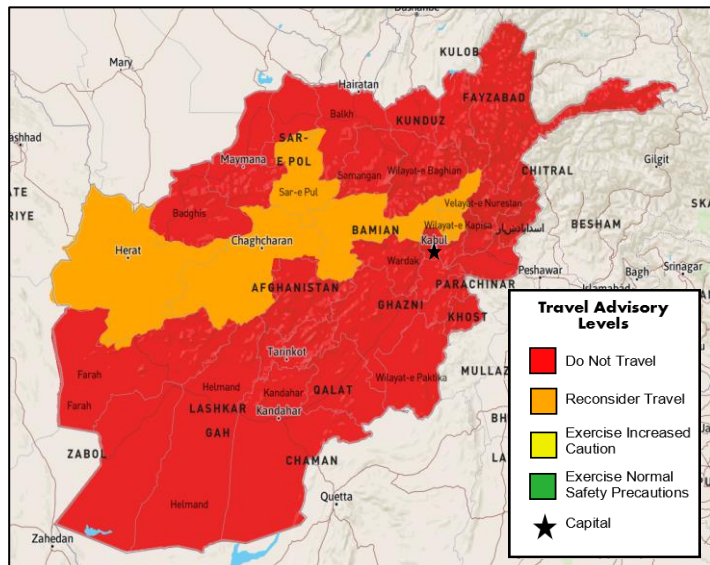


Afghanistan

Risk Level: **Extreme**

Country Overview:

It is advised that all travel to Afghanistan be avoided. Travel is unsafe due to the unstable security situation involving armed conflict, terrorism, crime, and civil unrest. There is an extreme risk to personal safety and security because of widespread military operations, terrorism, and insurgent attacks, and high levels of kidnappings, hostage-taking, suicide bombings, landmines, and vehicle-borne or other improvised explosive devices. Due to extensive warlordism and lawlessness, Afghanistan has long been beset by weak governance in many of its regions.



It is illegal to bring any foreign currency into Afghanistan. There are strict rules about goods you can take into or out of Afghanistan. You must declare anything prohibited or subject to tax or duty.

The Taliban launched a sweeping offensive against government forces, resulting in the complete collapse of the Afghan Government following the US-led withdrawal of foreign troops from the country. The US negotiated a deal with the Taliban, which required the withdrawal of all foreign forces. The agreement ended the two decades of occupation by the US and other foreign countries. With the Taliban's control of the country virtually unopposed, they have been swift to reverse reforms and are on a path of reinstating previously held policies.

The US Embassy in Kabul suspended operations on August 31, 2021. While the US government has withdrawn its personnel from Kabul, it continues to assist US citizens and their families in Afghanistan from Doha, Qatar.

866-340-8569



info@wwfocus.com



www.focuspointintl.com





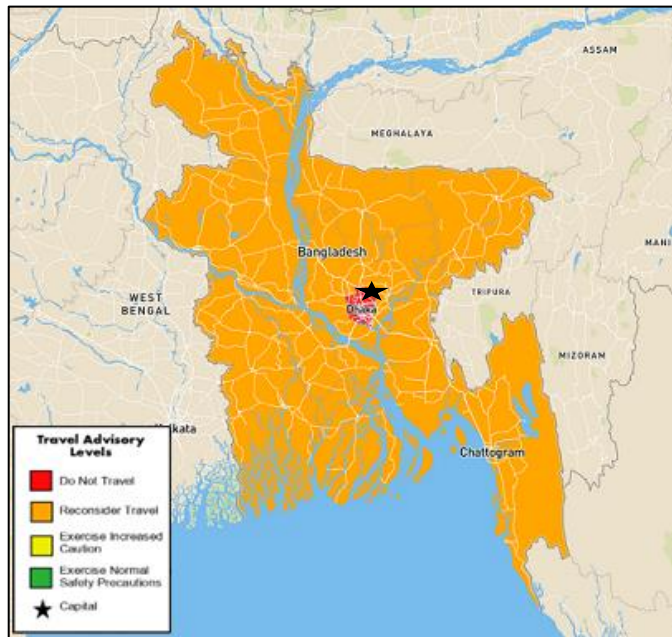
Bangladesh

Risk Level: **Extreme**

Country Overview:

Travelers should avoid traveling to Bangladesh due to the recent civil unrest in Dhaka. The country was gripped by weeks of anti-government protests caused by university student protests against civil service job quotas. As the protests grew, clashes between police and protestors resulted in over 300 deaths. Attempts to quell the protests failed and led to the resignation of former Prime Minister Sheikh Hasina on August 5, 2024. Professor Muhammad Yunus was named interim prime minister.

Political rallies and demonstrations may occur, leading to clashes with law enforcement. Arson, violence, and vandalism can happen in towns and cities nationwide. Attacks against property and public transport are possible.



Travelers should be aware of petty crimes such as pickpocketing in crowded areas. Crimes such as muggings, burglaries, assaults, and illegal drug trafficking constitute most of the criminal activity in Bangladesh's major cities. These crimes tend to be situational, based on time and location.

Terrorist attacks can happen with little or no warning, targeting public areas such as tourist locations, transportation hubs, markets/shopping malls, restaurants, places of worship, school campuses, and government facilities. Due to security concerns, US Embassy personnel in Bangladesh are subject to some movement and travel restrictions. The US government may have limited ability to provide emergency services to US citizens in Bangladesh due to these travel restrictions, a lack of infrastructure, and limited local emergency response resources.

The Khagrachari, Rangamati, and Bandarban Hill Tracts districts experience occasional communal violence, crime, terrorism, kidnapping, and other security risks. Kidnappings have occurred in the region, including those motivated by domestic or familial disputes and those targeting members of religious minorities. Separatist organizations and political violence also pose additional threats to visitors to the region, and there have been recent instances of IED explosions and active shootings. Prior approval from the Government of Bangladesh's Ministry of Home Affairs Office of Public Safety is required if you travel to these areas.

866-340-8569



info@wwfocus.com



www.focuspointintl.com





Belarus

Risk Level: **Extreme**

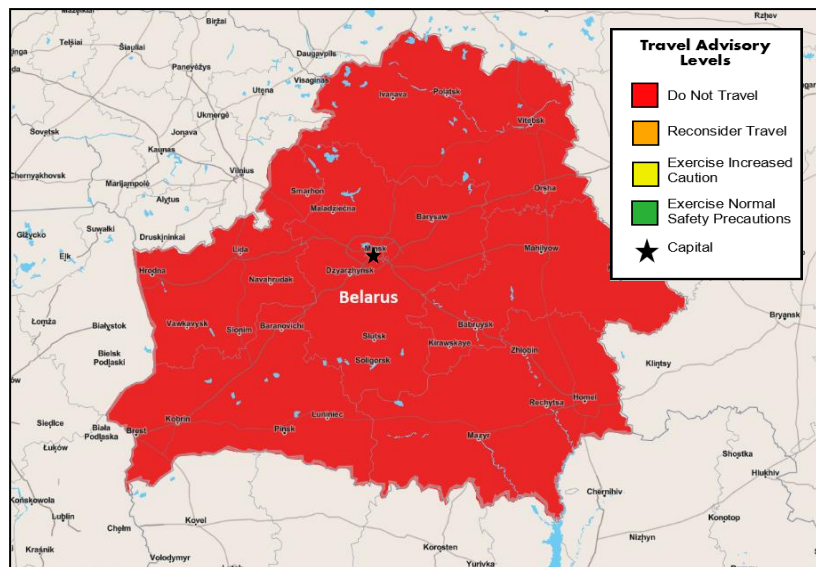
Country Overview:

The security situation in Belarus is hazardous due to ongoing Russian military operations in Belarus and Russian military operations in Ukraine. Travel to Belarus is not advised due to the risk of arbitrary enforcement of laws, the Russian military attack on Ukraine, and Russian military operations.

The US Embassy in Belarus has closed, and all US consular services have been suspended. All US government employees have departed the country, and it is advised to exercise extreme caution and vigilance and avoid all public demonstrations. Belarusian authorities are known to detain individuals for suspicion of alleged affiliations with opposition parties or alleged participation in political protests. The Belarusian Government has arrested thousands of individuals, and Belarusian authorities have targeted independent and foreign media. It forced a commercial aircraft transiting Belarusian airspace to stop and land to arrest an opposition journalist. Belarus does not recognize dual nationality; authorities consider travelers with a Belarusian passport to be Belarusian.

The Belarusian Government supports Russia's attack on Ukraine, with Russian military operations taking place in Belarus and the country facilitating the launch of Russian missile strikes into Ukraine. There is a heightened threat of conflict ensuing within Belarusian borders. The situation remains unpredictable and could escalate without warning. The following areas are considered exceptionally high risk due to Russian and Belarusian military presence: Yelsk, Rechitsa, Mazyr, Gomel, Bresk, Baranovichi, and Asipovichy. As of July 18, Lithuania has imposed additional border restrictions with Belarus, closing all entry points except for Medininkai-Kamenny Log and Šalčininkai-Benyakoni. Cars registered in Belarus are now generally prohibited from entering, though some exceptions will apply until August 16.

It is illegal to take photographs of any military activity or establishments. Although the situation is calm throughout the rest of the country and Minsk, it could change quickly and without warning. Some border crossings into Poland have been closed to vehicles, and more movement restrictions can be implemented at short notice, especially in the border regions.



866-340-8569



info@wwfocus.com



www.focuspointintl.com





Burkina Faso

Risk Level: **Extreme**

Country Overview:

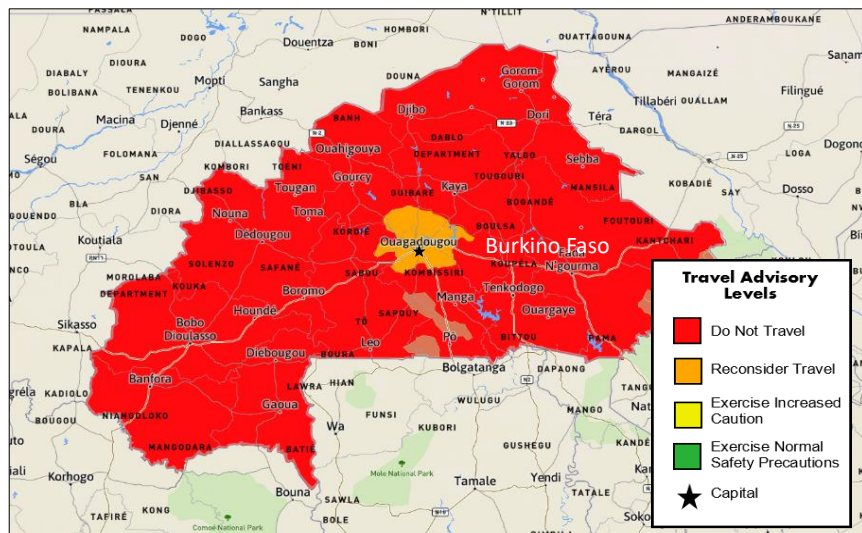
The security situation in Burkina Faso is hazardous, with some parts of the country being extremely unsafe. It is advised to avoid all travel to Burkina Faso due to terrorism and crime. There is a high risk to personal safety and security because of terrorist activity and common violent crimes.

Burkina Faso's military Government was dissolved in September 2022, with the constitution and transitional charter suspended.

This coup stems from the perceived failure of now-deposed leaders to suppress attacks from armed groups associated with ISIL (ISIS) and al-Qaeda. It is also the second coup in a year in the West African nation following the overthrowing of Roch Kabore in January 2022. General staff within the Burkina Faso army implied that the coup resulted from internal friction within the military and that dialogue between the conflicting parties was ongoing.

Westerners have been abducted and killed in Burkina Faso and the greater Sahel region. Kidnapping is still a serious concern throughout Burkina Faso, especially in Ouagadougou and the larger Sahel region. Additionally, there is a chance that terrorist organizations could enter Burkina Faso through the northern border with Niger and the border from Mali to carry out kidnapping attacks, particularly in Ouagadougou.

It is advised to avoid Soum in the north and the southeast on the border with Benin as these are active military zones. Civilians found in these areas risk getting caught up in ongoing military operations.



866-340-8569



info@wwfocus.com



www.focuspointintl.com





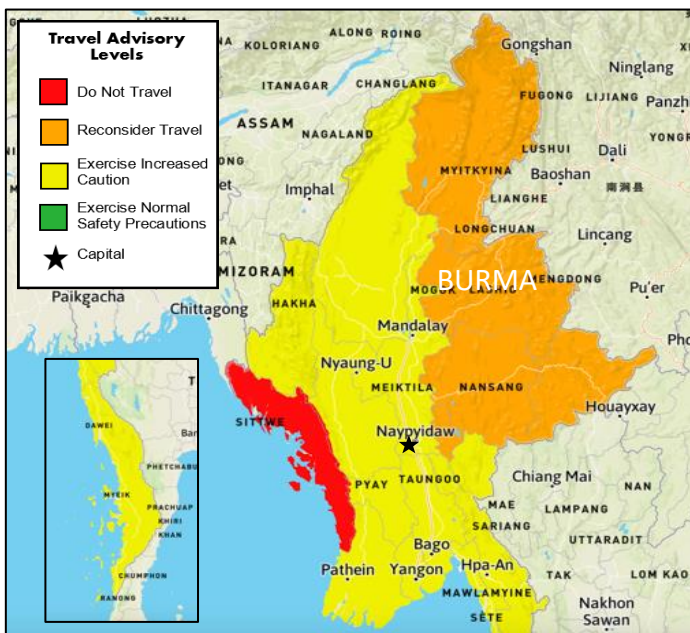
Burma (Myanmar)

Risk Level: **Extreme**

Country Overview:

The security situation in some parts of Myanmar is hazardous, with specific areas extremely unsafe. Due to civil unrest and armed conflict, it is advised not to travel to Myanmar. There is a high risk to personal safety and security because of fighting between the Myanmar military and various ethnic armed groups and militia forces.

Avoiding travel to Rakhine State due to civil unrest and armed conflict is advised. Trip to Chin, Kayin, Kachin, and Shan State townships is not recommended due to civil unrest and armed conflict. Travelers should avoid areas bordering China, Laos, Thailand, Bangladesh, and India.



On February 1, 2021, Myanmar’s military detained former State Counsellor Aung San Suu Kyi and other senior leaders over unsubstantiated claims of election fraud. Suu Kyi was subsequently sentenced to 33 years in prison. Since the coup, daily pro- and anti-military rallies in Yangon and Mandalay have frequently escalated into violence, with security forces firing live ammunition at protesters. Attacks targeting military personnel and installations, such as checkpoints, are common and sometimes affect civilians and foreign nationals in hotels, restaurants, and residential areas. In response to the coup, rebel groups in northern Myanmar have united against the military junta, seizing control of towns and territories. Despite superior equipment and air support, the military has struggled to suppress the rebels. Cross-border artillery fire has also impacted Chinese cities, injuring Chinese citizens. Travel to Myanmar is strongly discouraged due to ongoing violence and instability.

It is advised to avoid all but essential travel to the east of the Yangon-Mandalay Expressway in the Bago region and Rakhine state.

A state of emergency remains in place across Myanmar. The security situation is unpredictable and liable to change without notice, and the authorities can restrict access to any area at any time. Current townships under martial law are Hlaing Thaya, Shwe Pyithar, North Okkalapa, North Dagon, South Dagon, and Dagon Seakkan, but these are subject to change.

866-340-8569



info@wffocus.com



www.focuspointintl.com



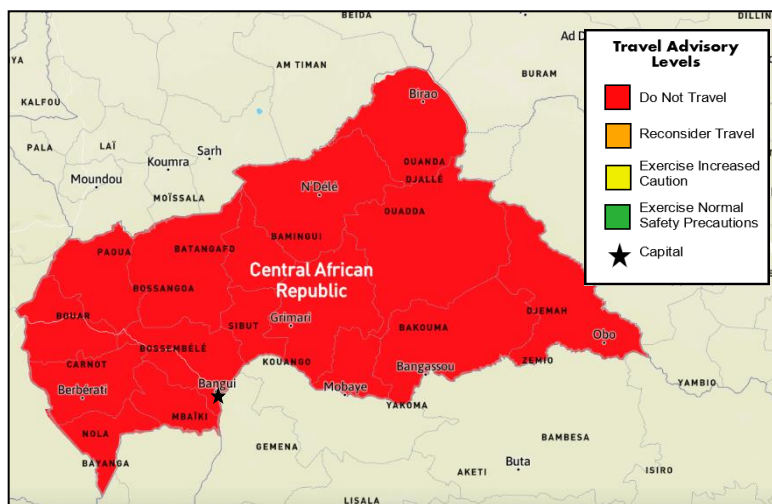


Central African Republic

Risk Level: **Extreme**

Country Overview:

The security situation in the Central African Republic (CAR) is perilous, and all travel is strongly advised against due to civil unrest, crime, and extreme risk to personal safety. Sectarian violence by armed groups, along with everyday criminal activities, poses significant threats such as armed robbery, aggravated battery, homicide, looting, kidnapping, and carjacking incidents, particularly outside the capital.



Although there are no specific threats targeting US citizens, civil unrest, demonstrations, and post-election violence remain ongoing risks. The likelihood of violent attacks, including carjackings, is high with little notice. Armed conflict persists in the north and east; government services are limited outside Bangui. There are poor road conditions, especially in the rainy season, with few paved roads outside Bangui. Armed patrols by various groups, including government forces and militias, occur frequently.

Exercise caution in outlying areas where theft and robbery are common, often perpetrated by armed gangs. Take precautions by seeking professional security advice and using trusted transport to enhance your safety.

Avoid traveling after dark for essential travel to rural areas and move only in a convoy with a security escort. A national curfew is in place from 10 p.m. to 5 a.m., and compliance with government instructions is crucial. Additionally, there are reports of a hemorrhagic fever outbreak in CAR, resulting in four deaths, particularly in Kabo, Ouham-Fafa Prefecture.

Areas bordering the Democratic Republic of Congo are at risk of Ebola outbreaks, warranting increased caution when traveling to these regions.

Except for the capital, Bangui, it is advised to avoid traveling to any part of the Central African Republic, including the regions of Bimbo, Begoua, and Coline.

866-340-8569



info@wwfocus.com



www.focuspointintl.com





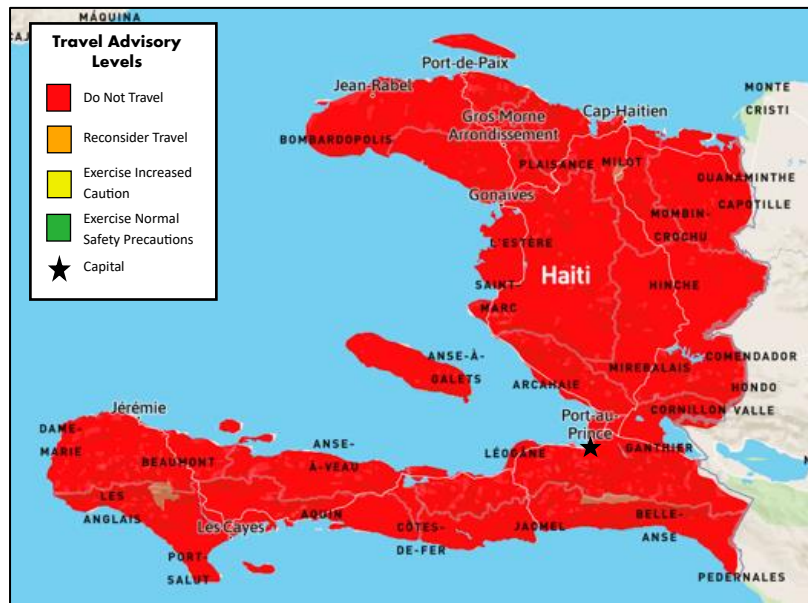
Haiti

Risk Level: **Extreme**

Country Overview:

The security situation in Haiti is unstable and extremely dangerous. Avoiding travel to Haiti is advised due to civil unrest and crime. There is a high risk to personal safety and security due to the widespread violent and unpredictable demonstrations in Port-au-Prince and elsewhere in the country.

Severe fuel shortages plague the country, impacting essential service provision countrywide. Medical services, electricity, and communications have been heavily affected.



Gang conflict has intensified in the capital, with heavily armed gangs seizing city sections from government authority, attacking government buildings, and calling for the resignation of the prime minister.

Kidnappings in the city are rising as gangs target people going to and from work. Criminal groups often use firearms and extreme violence to kidnap victims. The country is also experiencing an acute food shortage, with nearly half the country's population facing hunger and a recent surge in cholera. The Government has adopted a state of emergency in parts of Port-au-Prince that will last until September 19. The state of emergency grants security forces powers to create and enforce curfews and ban circulation in these areas to support their activities. Travelers are advised to stay abreast of local news.

While the land border between Haiti and the Dominican Republic remains shut, the Dominican Government has declared the resumption of air travel between the two countries on October 30. The situation concerning the border can change suddenly, and it is advisable to monitor local media for any updates.

It is advised to avoid all travel to Haiti, mainly to avoid the Bel Air, Carrefour, Cité Soleil, and Martissant neighborhoods in Port-au-Prince. Do not drive through roadblocks; if you encounter one, turn around and get to a safe area. Travelers are sometimes followed, violently assaulted and robbed shortly after leaving Port-au-Prince. The US Embassy requires personnel to use official transportation to and from the airport.

866-340-8569



info@wwfocus.com



www.focuspointintl.com



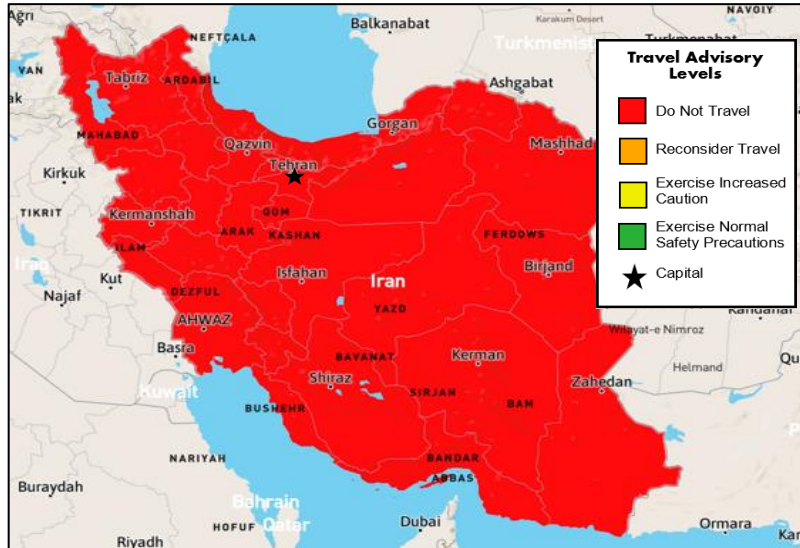


Iran

Risk Level: **Extreme**

Country Overview:

The security situation in Iran is hazardous, with specific parts of the country being extremely unsafe. Travel to Iran is not advised due to the risk of arbitrary arrest and detention. Iran experienced one of the highest incidences of COVID-19 in the Middle East. The risk of community transmission remains high, and extreme caution is advised. Iran has begun lifting its lockdown and resuming business activity.



US citizens in Iran face the risk of kidnapping, arrest, and unjust detention on various charges particularly dual national Iranian Americans. These charges include espionage and posing a threat to national security. Iranian authorities often delay consular access and consistently deny it to dual U.S.-Iranian citizens. The US government lacks diplomatic relations with Iran, limiting its ability to provide emergency services. Foreign nationals in Iran are urged to carefully consider the risks, as detention could lead to prolonged imprisonment.

Pakistan claimed that recent military strikes on Iran were a "highly coordinated" intelligence-based operation against armed groups in Iran's Sistan-Balochistan province, citing "impending large-scale terrorist activities." There is tension in the Middle East region. The situation could escalate quickly and pose risks. We continue to advise against all travel to Iran. On October 1, Iran launched over 200 ballistic missiles directed at Israel, marking a troubling escalation in regional tensions. In response, on October 26, Israel took military action. Following these developments, reports indicate that Iran has opted to close its airspace, which may lead to the cancellation of flights impacting air travel.

Travelers are advised to avoid border areas near Iraq, Afghanistan, and Pakistan, including Sistan and Balochistan province and regions east of Bam in Kerman province, due to the risk of violent unrest and cross-border clashes. Avoid lingering near military checkpoints and report suspicious activity. For extended travel between cities, hiring a reputable local guide is recommended.

866-340-8569



info@wwfocus.com



www.focuspointintl.com





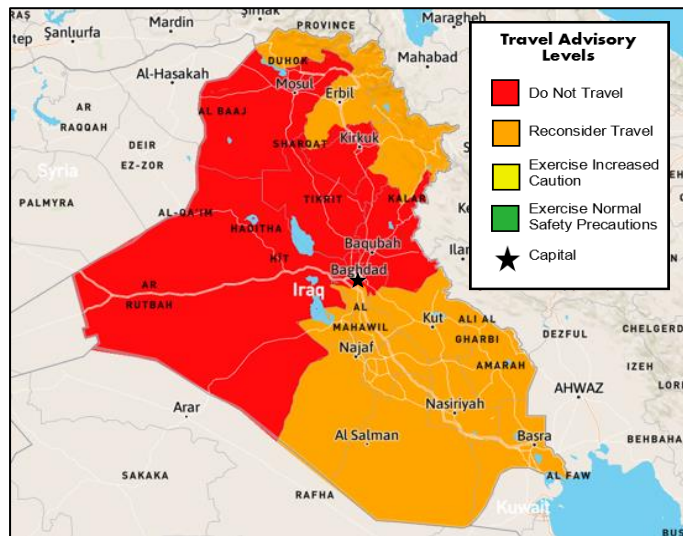
Iraq

Risk Level: **Extreme**

Country Overview:

The security situation in Iraq is hazardous. It is advised to avoid traveling to Iraq. Travel is unsafe due to terrorism, kidnapping, and armed conflict. There is also an extreme risk to personal safety and security because of active insurgent and terrorist groups, sectarian militias, and high levels of violence, including kidnappings, suicide bombings, and vehicle-borne or improvised explosive devices (IEDs).

Iraq remains subject to regional tensions. Militia groups opposed to the Western presence in Iraq continue to threaten Western interests in Iraq, including through attacks on Global Coalition military bases, diplomatic premises, and foreign nationals. The security situation remains uncertain and could deteriorate with little warning. Protests regularly take place in and around the International Zone in Baghdad. Protests can, and sometimes do, escalate into violence. You should avoid any rallies, marches, or processions and follow the instructions of local authorities.



Iraq faces regional tensions, with some areas experiencing sporadic attacks by artillery, drones, and rockets. There is an ongoing threat to Western interests. Travelers are advised to stay vigilant, implement strong security measures, have contingency plans, and stay informed about the latest developments through the media and travel advisories. It is recommended that security arrangements be regularly reviewed and updated.

US citizens are advised to avoid areas near the Turkish, Syrian, and Iranian borders due to continuous military operations against insurgent groups. There is ongoing armed conflict at the Syrian border, and traveling from Iraq to Syria for armed conflict is strongly discouraged. Engaging in such activities poses extreme personal risks, including kidnapping, injury, or death, as well as legal risks, such as arrest, fines, and expulsion. The Kurdistan Regional Government has warned of prison sentences of up to ten years for those illegally crossing the border. Supporting designated terrorist organizations is a crime, carrying penalties such as prison time and hefty fines in the United States.

866-340-8569



info@wwfocus.com



www.focuspointintl.com





Israel

Risk Level: **Extreme**

Country Overview:

The security situation in Israel and Gaza is unstable, and certain areas are incredibly unsafe. Travelers to Israel or the Palestinian Territories are advised to exercise increased caution due to terrorism, civil unrest, and armed conflict. There is a moderate risk to personal safety and security because of clashes between Palestinians and Israeli authorities.

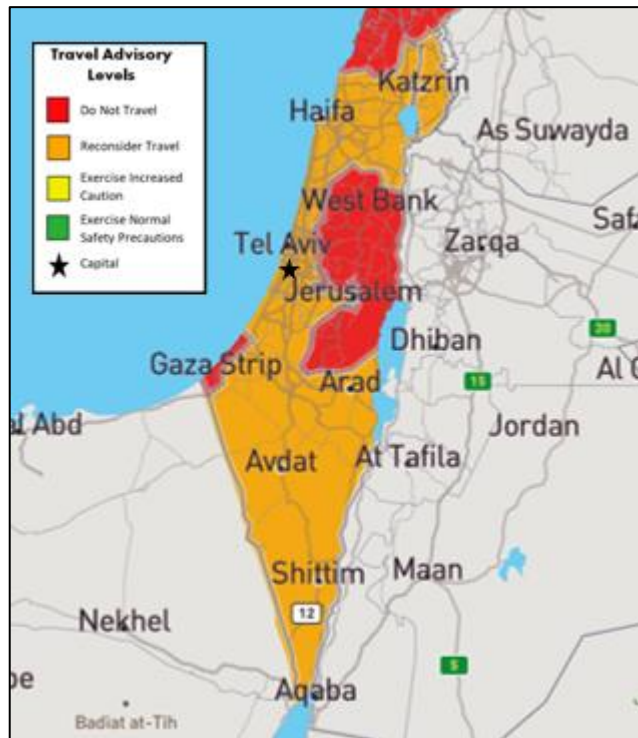
As of December 13, 2024, the US travel advisory no longer advises against all travel or all but essential travel to some areas of Israel and the West Bank but continues to advise against all travel or all but essential travel to other areas of Israel and the Occupied Palestinian Territories (OPTs).

On October 7, 2023, the Hamas militant group launched a surprise attack on southern Israel in the areas surrounding Gaza. Thousands of rockets were launched, combined with a ground attack from Gaza. At least 1,300 Israelis were killed in the attack, with a suspected 251 captured and taken into Gaza as hostages. Israel launched a full military offensive into the Gaza Strip, with the stated aim of eliminating Hamas in response. Israel and Hamas have agreed to the first phase of a ceasefire to release hostages and allow aid into Gaza.

Travelers near the Gaza border are advised to leave the area as soon as possible; otherwise, avoid the area altogether. Travelers in Israel are advised to go as quickly as possible. The security situation is expected to deteriorate as the conflict continues.

Following a year of clashes between Israel and Hezbollah and an Israel operation into southern Lebanon, Israel and Hezbollah have agreed to a 60-day ceasefire agreement backed by the USA. The deal requires Israel and Hezbollah to withdraw their forces from southern Lebanon. The Lebanese army and UN mission in Lebanon, UNIFIL, will monitor the ceasefire and patrol the border area. Travelers are advised to avoid traveling to regions bordering Lebanon.

Always exercise increased caution. These attacks could be indiscriminate and occur in places frequently visited by foreigners, including tourist sites, public transport hubs, and busy public spaces.





Lebanon

Risk Level: **Extreme**

Country Overview:

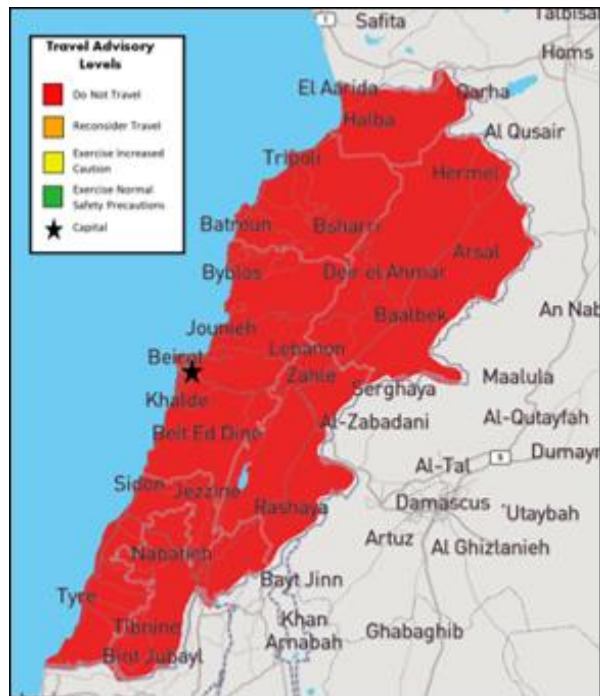
The security situation in Lebanon is hazardous, with some parts of the country being extremely unsafe. It is advised to avoid all travel to Lebanon due to the unpredictable security situation related to rocket, missile, and artillery exchanges between Israel and Hezbollah or other armed militant factions. There is a high risk to personal safety and security because of terrorist activity, armed clashes, kidnapping, and outbreaks of violence near Lebanon's borders with Syria and Israel. In January 2024, Deputy Hamas Chief Saleh al-Arouri was killed in a suspected Israeli drone strike in Beirut's southern suburbs of Dahiyeh.

Travelers should avoid southern Lebanon and depart if they are there; that is, all parts south of Saida, including inland areas. Cross-border rocket, missile, and artillery fire continue to impact southern Lebanon daily. It has caused a significant number of fatalities and injuries.

Israel and Hezbollah have agreed to a 60-day ceasefire agreement to bring an end to the year-long conflict along Lebanon's southern border. Under the terms of the deal, Israel and Hezbollah must withdraw their forces from the border region south of the Litani River. The Lebanese army will deploy to the area to monitor the ceasefire alongside the UN mission in Lebanon, UNIFIL.

Exercise caution, avoid demonstrations, and monitor local media for developments. There is a risk that access to the airport may be disrupted, whether by traffic congestion, temporary roadblocks, or closure caused by Israeli airstrikes nearby. Celebratory gunfire is common in Lebanon, and there is a risk of gunfire being fired in residential areas in reaction to major regional developments. If you hear gunfire, take cover immediately. If you are traveling to the airport, check the local security situation and only make the journey if you judge it safe to do so. Remain alert to local conditions as these could change quickly.

The Lebanese Government cannot assure the protection of US citizens against sudden eruptions of violence. Neighborhood, family, or sectarian disputes can spiral out of control quickly and, in turn, can lead to gunfire or other violence with no apparent warning.



866-340-8569



info@wwfocus.com



www.focuspointintl.com



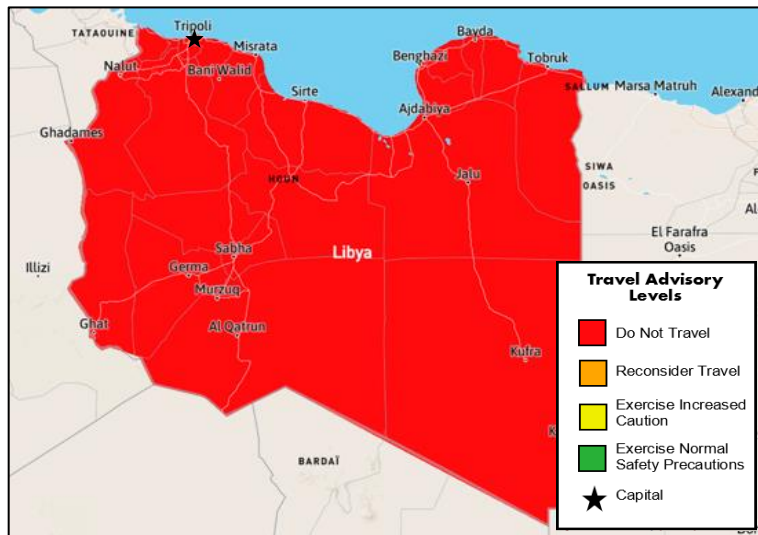


Libya

Risk Level: **Extreme**

Country Overview:

The security situation in Libya is hazardous. It is advised to avoid travel to Libya. Travel is unsafe due to armed conflict, terrorism, civil unrest, and crime. There is an extreme risk to personal safety and security because of high levels of terrorist activity and corruption, including kidnapping for ransom, suicide bombings, and vehicle-borne or other improvised explosive devices (IEDs). Terrorist groups continue plotting attacks in Libya. Violent extremist activity in Libya remains high, and extremist groups have made threats against



US government officials and citizens. Terrorists may attack without warning, targeting tourist locations, hotels, transportation hubs, markets/shopping malls, and government facilities.

The 2021 Libyan election is effectively on permanent hold as no significant political actor in the country shows any interest in preparing for an election that will likely see them lose power. Recent protests in the country have signaled a growing dissatisfaction amongst the electorate with the current de facto rulers: internationally recognized Prime Minister Hamid Dbeibah and renegade militant commander Khalifa Haftar. Civil unrest and outbreaks of violence between armed groups occur with little warning.

Foreign forces and mercenaries remain active in Libya. The Interim Government of National Unity has limited control over security throughout the country. The ongoing political instability has resulted in security incidents, road and airport closures, and oil blockades.

Tripoli and other cities, such as Surman, Al-Jufra, Misrata, Ajdabiya, Benghazi, Sabha, and Derna, have witnessed fighting among armed groups and terrorist attacks. Hotels and airports frequented by Westerners have been the targets of these attacks. Even demonstrations intended to be peaceful can turn confrontational and escalate into violence. Militia or armed groups sometimes detain travelers for arbitrary reasons, do not grant detainees access to a lawyer or legal process, and do not allow detainees to inform others of their status. The US government cannot provide emergency or routine.

866-340-8569



info@wwfocus.com



www.focuspointintl.com





Mali

Risk Level: **Extreme**

Country Overview:

The security situation in Mali is hazardous. It is advised to avoid traveling to Mali. Travel is unsafe due to political instability, crime, and terrorism. There is an extreme risk to personal safety and security because of terrorist activity and violent crimes such as kidnapping and armed robbery.

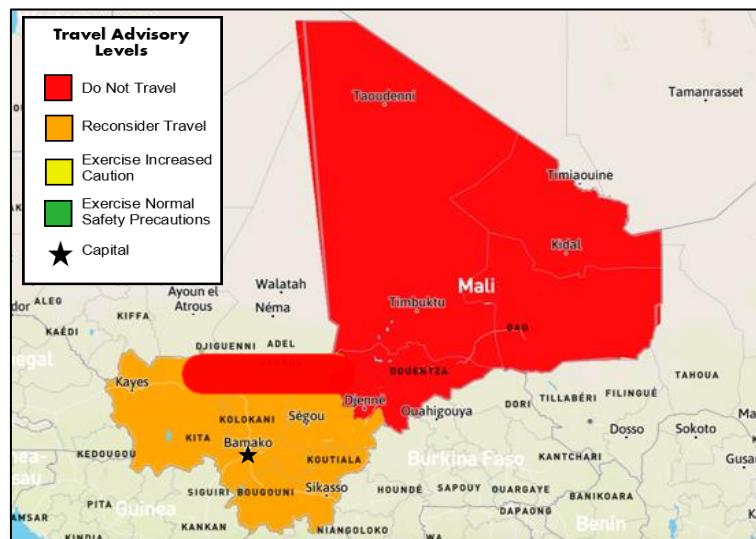
In Mali, violent crimes such as kidnapping and armed robbery are common. Violent crime is prevalent during seasonal events and local holidays, especially in Mali's southern regions and Bamako suburbs. It is common to see random police checkpoints and roadblocks at night throughout the country.

Armed groups and terrorists continually plague Mali with kidnappings and attacks without warning. They often target nightclubs, restaurants, places of worship, hotels, Western diplomatic missions, and other locations that foreigners frequently visit.

Terrorist attacks are likely to be carried out in Mali. Although kidnapping is particularly prevalent in the northern and central parts of the country, kidnappings occur elsewhere across Mali.

There is an extreme risk to personal safety and security to Westerners in Bamako as the Al-Qaeda-affiliated terrorist group, Jama'at Nusrat al-Islam wal-Muslimin (JNIM), publicly stated their intention to conduct attacks in Bamako. The US government has ordered all US government employees and families to depart the country due to the increase in terrorist attacks carried out in areas frequented by Westerners.

In Mali, thousands of foreign troops are leaving due to escalating violence, expanding Russian influence, and a severe humanitarian catastrophe. Since their initial deployment a decade ago, thousands of French troops and UN peacekeepers have failed to stop large portions of Mali from under the control of an Islamic extremist insurgency affiliated with organizations like al-Qaida and the Islamic State, with the current Government demanding all troops to leave.





North Korea

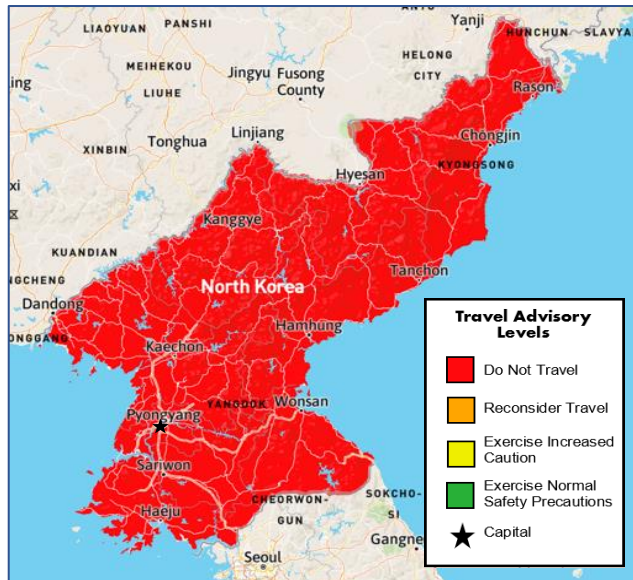
Risk Level: **Extreme**

Country Overview:

It is advised to avoid all travel to North Korea. The security situation remains volatile on the Korean peninsula, and North Korea's political tensions can change with little notice and no warning and pose an extreme risk to visitors.

Travel is unsafe due to the severe risk of arrest and long-term detention. In addition, US passports are only valid for travel to, in, or through North Korea with specific validation from the US Department of State. Unique assurances are granted only in limited circumstances.

Kim Jong Un revealed new plans for his country's military, which point to more intense weapons testing and heightened regional tensions in the coming year.



The US government cannot provide emergency services to US citizens in North Korea as it does not have diplomatic or consular relations with North Korea. Sweden serves as the protecting power for the United States in North Korea, providing limited emergency services. The North Korean Government routinely delays or denies Swedish officials access to detained US citizens.

866-340-8569

info@wwfocus.com

www.focuspointintl.com



Russia

Risk Level: **Extreme**

Country Overview:

In some parts of Russia, security is hazardous, with specific areas extremely unsafe. Due to terrorism, harassment, and the arbitrary enforcement of local laws, it is advised to exercise increased caution in Russia.

There is an overall moderate risk to personal safety and security throughout the rest of the country due to terrorist groups continuing to plot attacks.

On March 22, 2024, four gunmen stormed the Crocus City Concert Hall in Krasnogorsk near Moscow. They opened fire at patrons before setting the building ablaze, resulting in over 137 people dead and several injured. Additionally, in June 2024, at least 20 people were killed after armed assailants attacked synagogues, churches, and police in Dagestan. Travelers should be vigilant when in popular and crowded areas. Additional counter-terrorism procedures and restrictions across the country are to be expected.

Avoid all travel to parts of the North Caucasus region (including the Mount Elbrus area), such as Chechnya, Dagestan, Ingushetia, North Ossetia, and the southeast part of Stavropol bordering Chechnya, Kabardino-Balkaria, and Karachay-Cherkessia; and within 10km of the border with the Ukrainian Donetsk and Lugansk Oblasts.

Russia enforces special restrictions on dual U.S.-Russian nationals. It may refuse to acknowledge dual U.S.-Russia nationals' US citizenship, including denying US consular assistance to detained dual citizens and preventing their departure from Russia. Due to the Russian government-imposed reduction in US diplomatic personnel, the US government may delay providing services to US citizens.

Finland has extended the closure of its road borders with Russia until further notice, including its maritime borders, responding to what it perceives as an orchestrated influx of asylum seekers from Russia. Moscow denied the claim when the closure was briefly lifted in December, resulting in over 300 asylum seekers entering from Russia within two days and prompting the extended closure.

Russia's full-scale attack on Ukraine is still ongoing. As a result, Western nations have placed severe economic sanctions against Moscow, which has far-reaching effects on those in the country. Russian forces have faced setbacks after making initial gains, occupying nearly a fifth of Ukraine. Ukraine has begun a counteroffensive to retake Russian-occupied territory; however, progress has been slow.



866-340-8569



info@wwfocus.com



www.focuspointintl.com





Somalia

Risk Level: **Extreme**

Country Overview:

It is advised to avoid traveling to Somalia. The security situation in Somalia is hazardous. Travel is unsafe due to crime, terrorism, and piracy at the hands of armed militia. There is an extreme risk to personal safety and security because of terrorist activity and violent crime, such as kidnapping and murder, which are common throughout the country.

Al-Shabaab has lost control of a significant portion of its southern and central Somalia territory due to the success of the Africa Union Mission in Somalia (AMISOM)-led Operation Indian Ocean offensive.

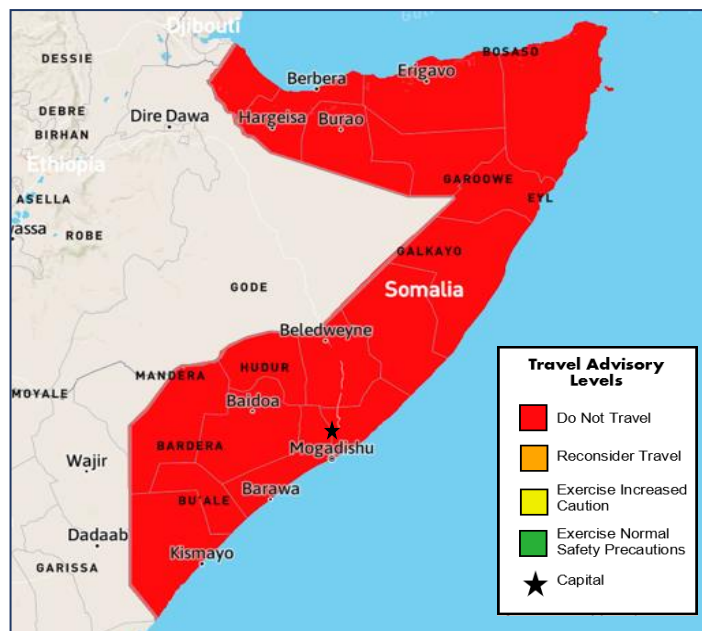
There is a current outbreak of Polio that has the potential to impact travelers.

Medical facilities across Somalia have limited capacity and are often non-existent in rural areas.

Terrorists are very likely to try to carry out attacks in Somalia. There is a high threat of kidnap throughout the country. Several Western nationals, including British nationals, have been kidnapped in Somalia, and some have been killed. Terrorist groups have made threats against Westerners and those working for Western organizations. There is a constant threat of terrorist attacks in Mogadishu, and terrorists continue to plan attacks against Westerners in the rest of Somalia, including Somaliland. Terrorist attacks could be indiscriminate, including in crowded places, high-profile events, events involving government officials, and places visited by foreigners. Due to their use by government officials, hotels are considered legitimate targets by terrorist groups.

Terrorists continue to plot kidnappings, bombings, and other attacks in Somalia. They may conduct attacks with little or no warning, targeting airports and seaports, government buildings, hotels, restaurants, shopping areas, and other areas where large crowds gather and Westerners frequent, as well as Government, military, and Western convoys. Attack methods include car bombs, suicide bombers, individual attackers, and mortar fire.

The US government can only provide emergency services to US citizens in Somalia without a permanent consular presence.



866-340-8569



info@wwfocus.com



www.focuspointintl.com





South Sudan

Risk Level: **Extreme**

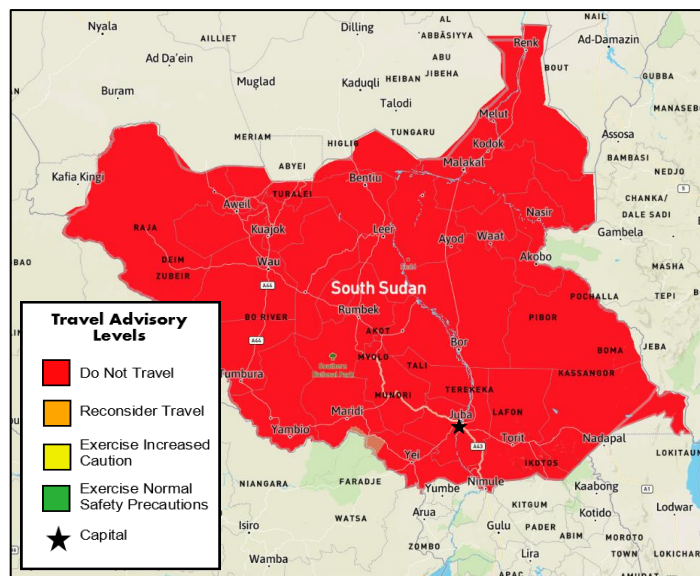
Country Overview:

The security situation in South Sudan is hazardous. Travel is unsafe due to crime and armed conflict. There is an extreme risk to personal safety and security because of armed clashes, border disputes, ethnic violence, and corruption, including carjacking, shootings, ambushes, assaults, robberies, and kidnappings.

Travelers to South Sudan should ensure that they have comprehensive contingency plans that do not depend on support from the Embassy. US government personnel in South Sudan are under strict curfew; they require armored vehicles for nearly all movements, and official travel outside Juba is limited.

Foreign nationals have been the victims of rape, sexual assault, armed robberies, and other violent crimes. Armed conflict is ongoing throughout the country and includes fighting between various political and ethnic groups, and weapons are readily available to the population. Journalist work is also very hazardous and illegal without the proper documentation.

It is advised that all travel to South Sudan be avoided.



866-340-8569



info@wwfocus.com



www.focuspointintl.com





Sudan

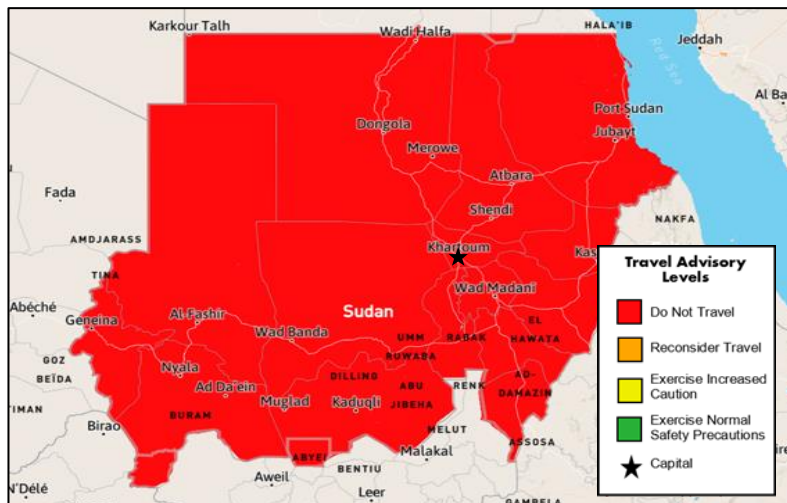
Risk Level: **Extreme**

Country Overview:

The security situation in Sudan is hazardous. Travel is unsafe due to crime, terrorism, kidnapping, and armed conflict. Armed conflict and criminal activity are mainly present in contested regions, although kidnappings, armed robberies, and carjacking occur in all parts of the country.

Following months of intense protests, Sudan's journey to democratic rule has been fragile since the April 2019 military ouster of the long-time ruler Omar al-Bashir.

A power-sharing agreement was established to form a government involving the military, civilian representatives, and protest groups. However, a second military coup on October 25, 2021, reignited the ongoing political crisis, and the situation remains fragile.



Fighting between the military and paramilitary forces erupted in Khartoum on April 15, 2023. The conflict has caused considerable damage to the city, and the violence has quickly spread throughout the country, resulting in civilian casualties. The security situation is unstable, with reports of looting, sexual assaults, and attacks on foreigners and international organization employees.

Access to essential services, including hospitals, food, water, medication, and fuel, has been disrupted, and the telecommunication network could be unreliable. Commercial flights to all airports have been halted, and overland travel is highly hazardous. Khartoum International Airport is closed. The only functional civilian airport operating international flights is Port Sudan Airport. Chad has closed its border with Sudan.

Crimes, such as kidnapping, armed robbery, and carjackings, happen regularly and are more frequent outside of Khartoum. Members of known terrorist groups and individuals sympathetic to these groups in Sudan could attack with little to no warning, targeting foreign and local government facilities and areas frequented by Westerners. Demonstrations can occur with no warning and are more likely to occur due to the Israel-Gaza war. Avoid all travel within 20km of the border with Eritrea, Ethiopia, and the al-Fashaga region.

Sudan is experiencing an outbreak of Dengue fever. Dengue fever is a mosquito-borne illness that spreads close to still water sources. As of January, the Sudanese Health Ministry reported 844 confirmed cases and 5,358 suspected cases of the disease.

866-340-8569



info@wwfocus.com



www.focuspointintl.com



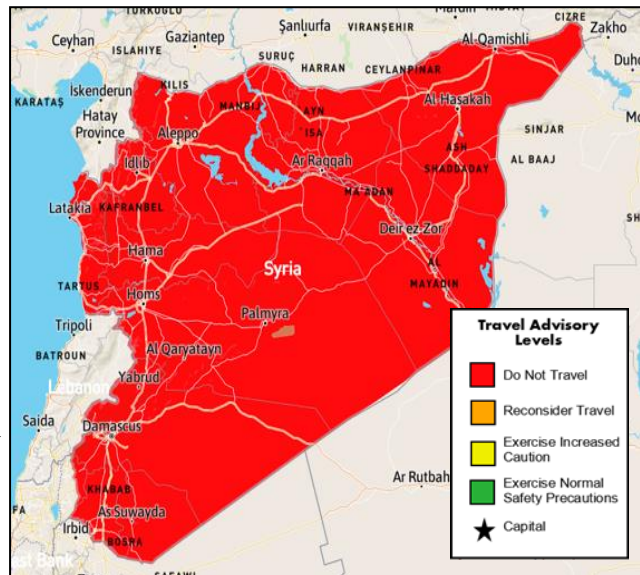


Syria

Risk Level: **Extreme**

Country Overview:

In Syria, the security situation is hazardous. It is advised to avoid traveling to Syria. Travel is unsafe due to armed conflict, terrorism, and civil unrest. There is an extreme risk to personal safety and security because no part of Syria is considered safe from violence. Widespread military operations involving chemical warfare, shelling, and aerial bombardment have significantly raised the risk of death or severe injury. Terrorists are very likely to try to carry out attacks in Syria, as continued attacks across Syria, including major cities, have left large numbers of people dead or injured. ★



In December 2024, rebel forces from the Hayat Tahrir al-Sham (HTS) militant group and its allies launched an offensive on Syrian government-held areas. The Syrian military has so far been unable to contain the rebel advance, even with Russian air assistance, with the rebels capturing the cities of Aleppo and Hama poised to siege the city of Homs. As of December 11, terrorist attacks in Syria, particularly by groups like Daesh (formerly ISIS/ISIL), continue to cause significant harm, especially in northeastern regions. These attacks are often indiscriminate, targeting civilians in public areas such as transport hubs, markets, religious sites, and hotels, as well as strategic locations like military facilities, government buildings, and oil facilities. Methods include shootings, bombings, suicide attacks, and rocket strikes, with many incidents designed to inflict mass casualties. Travelers are advised to exercise heightened caution during national holidays and religious observances, as attacks are more likely during such times.

The US government cannot provide any emergency services to US citizens in Syria. US citizens who seek consular services should try to leave the country and contact a US embassy or consulate in a neighboring country quickly and safely.

Long-standing conflict with neighboring states and porous borders has created a complex and unpredictable security environment. The Government detention centers are unsanitary facilities where inhumane, cruel, and degrading treatment of detainees has been documented, as well as torture and extrajudicial killings.

International commercial flights to and from Damascus International Airport are now operational. It is advised that all travel to Syria be avoided.

866-340-8569

info@wwfocus.com

www.focuspointintl.com



Ukraine

Risk Level: **Extreme**

Country Overview:

It is advised that travelers avoid all travel to Ukraine. The security situation in eastern Ukraine is dangerous, with some areas considered highly unsafe. Due to Russia's invasion, there is a heightened risk to personal safety and security throughout Ukraine.

On February 24, 2022, Russia invaded Ukraine with ground and air attacks on major Ukrainian cities, including its capital, Kyiv.

Russia's military moved into Ukraine from Crimea, Donetsk, and Luhansk territories and across the Russian Northern border and neighboring northern country Belarus. Ukrainian forces have begun a long-awaited offensive against captured territories; however, progress has been slow.

Do not travel to Crimea as the international community, the United States and Ukraine, does not recognize Russia's annexation. There is continuing abuse against foreigners and the local population by the occupation authorities in Crimea, particularly against those who challenge their influence on the peninsula.

There have been reports of abuse and arbitrary imprisonment by Russian Occupation authorities, targeting both foreigners and residents. Individuals who oppose Russia's occupation of the peninsula are primary targets.

Due to military activity, travelers should avoid all travel to Ukraine and leave the country if they are already there. Ukrainian airspace is closed, and most evacuations are via its western borders into neighboring countries. Martial law remains in place, and travelers should follow the instructions and advice of the Ukrainian authorities.



866-340-8569

info@wwfocus.com

www.focuspointintl.com

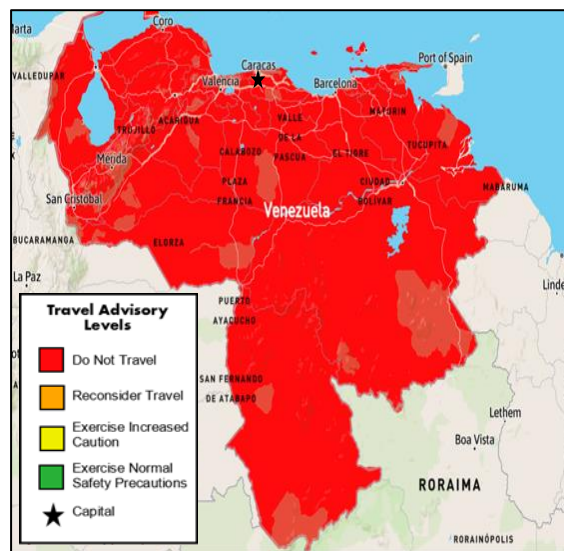


Venezuela

Risk Level: **Extreme**

Country Overview:

The security situation in Venezuela is hazardous. Travel is unsafe due to ongoing political instability, crime, poor health infrastructure, and arbitrary arrest and detention of foreign nationals. Political marches and demonstrations, which occasionally become violent, are frequent in all areas, and crimes like homicide, armed robbery, kidnapping, drug trafficking, and carjacking are common. Since March 11, 2019, the US Department of State has suspended all operations at the US Embassy in Caracas and has withdrawn all diplomatic personnel from Venezuela. The US has suspended all nonstop flights between Venezuela and the US until further notice.



Nicolas Maduro was sworn in as President of Venezuela on January 10, 2025, amid a tense political climate. Maduro is viewed internationally as an illegitimate president, with the US offering a bounty for his capture. There remains a heightened risk of protests and demonstrations, which could turn violent. Travelers are advised to avoid crowds, political gatherings, and security barricades and stay updated.

Some of Venezuela's land and sea borders are subject to closure. US citizens residing or traveling in Venezuela are advised to depart the country. Consular access to detained US citizens is severely restricted, and the US government is unlikely to be granted access. Security forces have arbitrarily detained US citizens for long periods. Venezuelan authorities may not notify the US government of the detention of a US citizen.

Avoid all travel within 40 km (25 miles) of the Brazil border. The area is active with drug traffickers and illegal armed groups, posing a significant risk of criminal kidnapping.

There are shortages of food, electricity, water, medicine, and medical supplies throughout much of Venezuela, and avoiding non-essential travel is advised. Travelers are advised to avoid the area within a 50-mile radius from the Venezuelan-Colombian border and a 25-mile radius from the Venezuela-Brazil border. Caracas International Airport frequently experiences disruptions due to power failures, leading to flight delays or cancellations. Travelers should stay in close contact with their airline or travel agent for updates and allow extra time for travel to the airport due to the current situation.

866-340-8569



info@wwfocus.com



www.focuspointintl.com



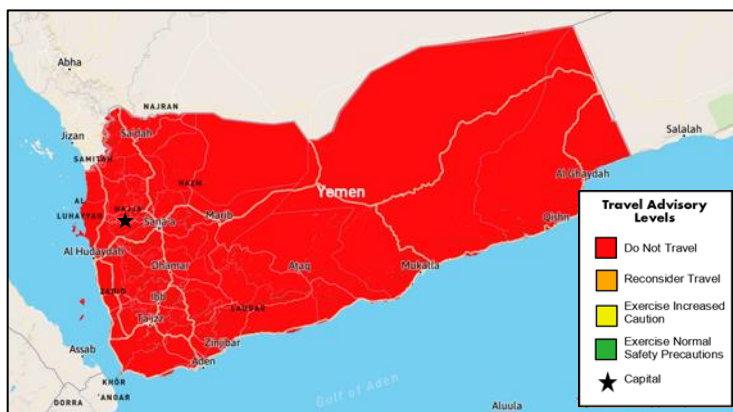


Yemen

Risk Level: **Extreme**

Country Overview:

The security situation in Yemen is hazardous. Travel is unsafe due to armed conflict, terrorism, and civil unrest. There is an extreme risk to health and personal safety because of ongoing military conflict, heightened terrorist activity, kidnappings for ransom, and unlawful detentions by rebel groups. Employees of Western organizations may be targeted in attacks or abductions. Military conflict has caused significant destruction of infrastructure, housing, medical facilities, schools, and power and water utilities. This limits the availability of electricity, clean water, and medical care.



There have been several instances of Israeli missile attacks targeting areas in Yemen controlled by the Houthi group. The continued risk of missile strikes in these areas poses a significant danger to individuals traveling through them. The presence of military-grade weapons poses a significant threat to visitors to the country, as they may be used by criminals, terrorists, or security forces.

Crime, including carjacking, robbery, and extortion, is pervasive across the country. Tribal conflicts over land frequently escalate into violence, and various militias, including the Houthis, operate extrajudicial detention facilities where arbitrary detainment occurs. Recent events in the Red Sea have heightened the risk of foreign nationals being detained.

The US Embassy in Sana'a suspended its operations in February 2015, and the US government cannot provide emergency services to US citizens. Cholera is also present throughout Yemen, and the provision of adequate medical supplies is either extremely limited or unavailable.

There is a very high risk of kidnapping and detention of US citizens in Yemen, particularly dual-national Yemeni Americans. Rebel groups in Sana'a have detained US citizens, including dual Yemeni American citizens. US citizens, including dual nationals, have faced difficulty departing Yemen, including lengthy delays.

There are reports of companies outside of Yemen offering tourist visits to the Yemeni island of Socotra and misrepresenting the security situation in the area. They include facilitating unofficial and invalid visas to the region. The sovereign Republic of Yemen Government is the only entity that can issue valid Yemeni tickets. US citizens should not travel to Socotra or any part of Yemen.

866-340-8569



info@wffocus.com



www.focuspointintl.com





HIGH RISK COUNTRIES

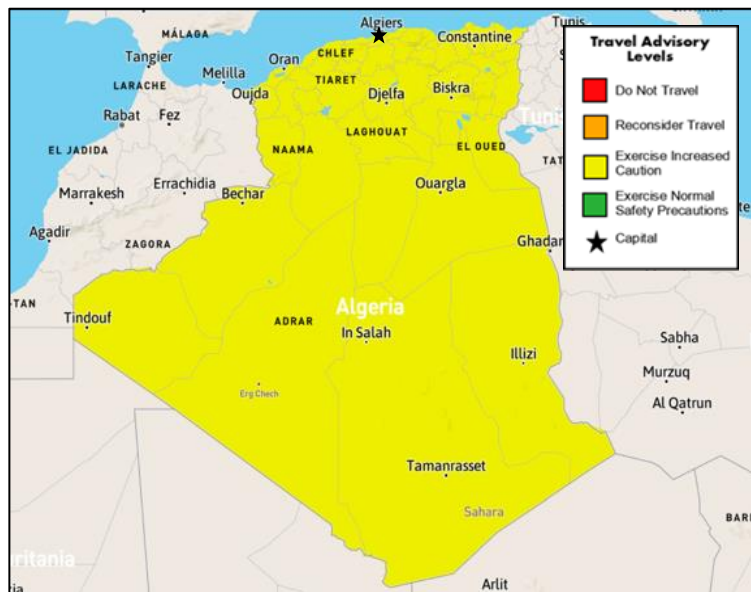


Algeria

Risk Level: **Moderate**

Country Overview:

In some parts of Algeria, the security situation is hazardous, with specific areas extremely unsafe. It is advised that Algerians exercise increased caution due to terrorism. There is a moderate risk to personal safety and security because terrorists are likely to carry out attacks, including kidnappings, and civil disturbances sometimes occur throughout the country. Since February 2019, mass protests have occurred across Algeria, demanding immediate political reform. Travelers should avoid political gatherings and demonstrations and follow local advice.



Terrorists are likely to try to carry out attacks in Algeria, including kidnappings. Terrorist attacks have focused on the Algerian state, but attacks could be indiscriminate and include foreigners. There's also a risk that lone actors could target foreigners. You should be vigilant of your surroundings and take additional security precautions, especially in the southern, Libyan, and Tunisian border areas, rural and mountainous regions of the north, and the Sahara.

Avoid traveling to rural areas within 50 km (31 miles) of the border with Tunisia and 250 km (155 miles) of Libya, Niger, Mali, and Mauritania due to terrorism and criminal activities, including kidnapping. Traveling within 30 km of the border with Tunisia in the provinces of Illizi and Ouargla and the Chaambi mountains area is not advised.

866-340-8569

info@wwfocus.com

www.focuspointintl.com



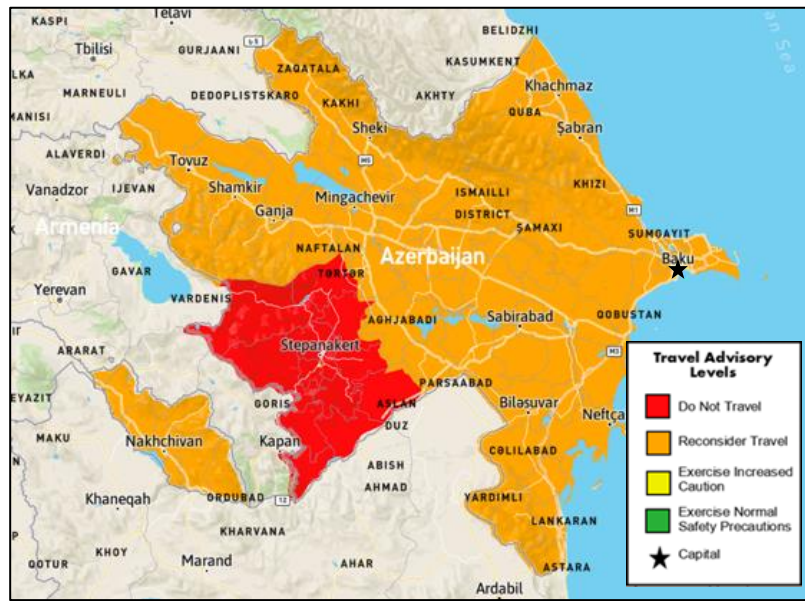
Azerbaijan

Risk Level: **Moderate**

Country Overview:

The security situation in some parts of Azerbaijan is hazardous, with specific areas extremely unsafe. It is advised that travel to Azerbaijan be reconsidered due to terrorism and armed conflict risk. There is a moderate threat to personal safety and security because terrorist groups continue to plot attacks.

Azerbaijan and Armenia are in dispute over the Nagorno-Karabakh territory. The region is recognized internationally as Azerbaijani, but ethnic Armenians have governed



since 1994 following a separatist movement. Conflict between the two countries erupted again on September 19 after Azerbaijani police and civilians were killed by landmines. Azerbaijan mobilized and seized control of the territory within two days. Azerbaijan has exerted control over the state and begun disbanding the former Government. Travelers are advised to avoid Nagorno-Karabakh and the nearby border with Armenia.

Nagorno-Karabakh and the international border between Armenia and Azerbaijan should be avoided. Some areas still contain unexploded ordinances (UXO), including the towns and rayons of Ganja, Tartar, Barda, Beylagan, and Aghjabadi. Efforts to remove these UXOs are underway, and it is advised not to touch or approach any UXO but rather to warn Azerbaijani authorities immediately. The US government cannot provide emergency services to US citizens in Nagorno-Karabakh as access is restricted.

866-340-8569

info@wwfocus.com

www.focuspointintl.com



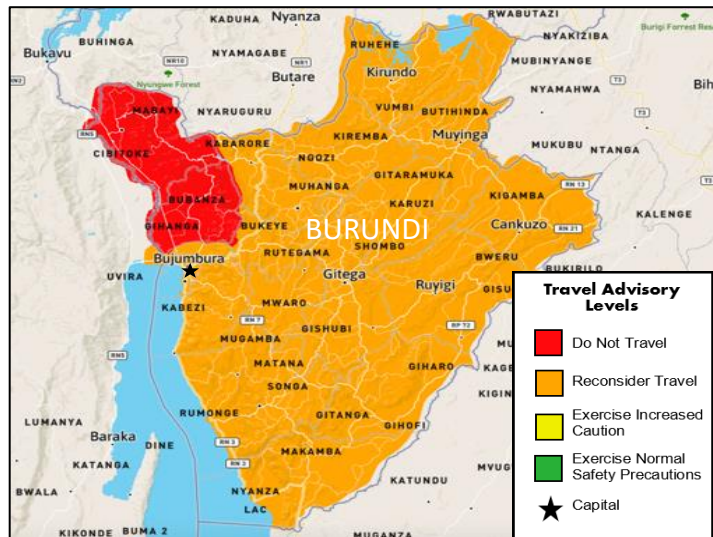
Burundi

Risk Level: **Extreme**

Country Overview:

The security situation in Burundi is hazardous, with some regions of the country being extremely unsafe. You are advised to reconsider traveling to Burundi. There is a high risk to personal safety and security because of ongoing political tensions, sporadic violence, clashes by armed groups, and serious crimes, such as armed robbery.

It is advised to avoid all travel to Cibitoke and Bubanza provinces; areas of Bujumbura Rural province west of the Rusizi River towards the Democratic Republic of the Congo border, except for the Rusizi Delta Nature Reserve; Ruvubu National Park; the road north of Bujumbura airport towards Cibitoke; and the main road running west from Kayanza through the Kibira National Park. It is also advised to limit all but essential travel to the rest of Burundi (excluding airside transit through Bujumbura International Airport).



Rift Valley Fever (RVF), a disease primarily affecting livestock, has been reported in the country. There are no reports of humans contracting the disease in Burundi; however, human infection remains possible through mosquito bites or for people in direct contact with infected animals. Burundi's rainy season, from October to May, often leads to flash floods.

In Burundi, the US government is unable to provide emergency services to US citizens. Due to travel restrictions on US Embassy personnel, the US government is not able to provide emergency services to US citizens in specific areas of Burundi, including the provinces of Bubanza and Cibitoke, Kibira National Park (including the park's southernmost part in Muramvya province), and Ruvubu and Buriri Forest.

Travelers are strongly advised to avoid the border region with the DRC due to the high risk of armed incursions. The Rusizi National Park is the only area in Bujumbura Rural Province where travel is advised.

A visa is required to visit Burundi and should be applied for online before traveling. Visas are issued upon arrival, cost \$90 for one month, and allow single or multiple entries. Payment can be made online or in cash on arrival.



Cameroon

Risk Level: **Extreme**

Country Overview:

The security situation in certain parts of Cameroon is hazardous. It is advised to exercise increased caution in Cameroon due to crime, civil unrest, and terrorism. There is a moderate risk to personal safety and security because of terrorist activity in Northern and Eastern Cameroon and violent crime, such as kidnapping, armed robbery, assault, and common carjacking.

The Anglophone Crisis is an ongoing armed confrontation in the long-standing Anglophone conflict over the creation of an independent state called Ambazonia in western Cameroon.

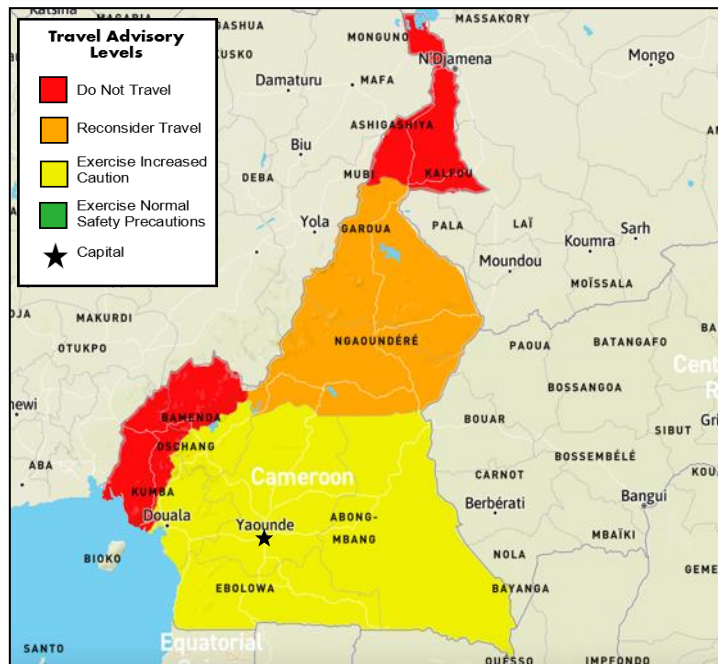
Over the past year, multiple clashes between security forces and armed groups have occurred in many places in the Northwest and Southwest regions, including in the towns

of Bafut, Tubah, Ndu, Widikum, and Lebialem division, the Gughe village, DongaMantung division, the Kikaikelaki village (Kumbo commune), Bui division, Bamessing village (Ndop commune), and Ngoketunjia division. Travelers should be vigilant, keep a low profile, and monitor local media.

It is advised to avoid travel to the North, Far North, Northwest, and Southwest Regions and parts of the East and Adamawa Regions within 20 km of Cameroon's border with the Central African Republic due to armed violence, terrorism, crime, and kidnapping.

There have been reports of an outbreak of hemorrhagic fever in Kie Ntem Province, north of Equatorial Guinea. The area surrounding it is off-limits to travel. It would be best to exercise extreme caution in and around Kie Ntem, Equatorial Guinea, Ambam, Kye-Ossi, and Olamze in southern Cameroon, Ntem, and Woleu in Gabon. Before you travel, check with the local authorities.

Due to current official travel restrictions, the US government cannot provide emergency services to US citizens in the North, Far North, Northwest, Southwest, and Parts of Adamawa and East Regions of Cameroon.



866-340-8569



info@wwfocus.com



www.focuspointintl.com





Chad

Risk Level: **Extreme**

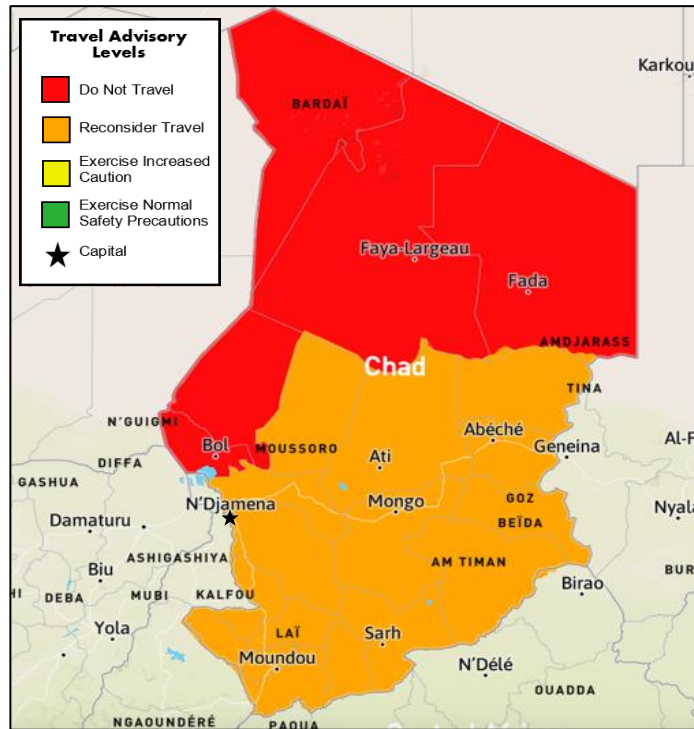
Country Overview:

The security situation in Chad is hazardous, with some parts of the country being extremely unsafe. It is advised to reconsider travel to Chad due to crime, terrorism, and the existence of minefields. There is a high risk to personal safety and security because of widespread violent crimes, such as armed robbery and mugging, as well as terrorist attacks and minefields along the borders of Libya and Sudan.

Chad's former President, Idriss Deby Itno, was killed in battle while fighting rebels en route to N'Djamena, the capital. The military took control of the country in the interim before the contested elections held in May 2024, which resulted in the late President's son, General Mahamat Idriss Deby Itno, being declared head of state as he consolidated power. Deby was the incumbent and led the transitional Government before the elections.

It is advised not to travel to the Lake Chad Region and the borders with the Central African Republic, Libya, and Sudan due to terrorism, armed conflict, and active minefields.

The US government needs to have more ability to provide emergency services to US citizens in Chad. US Government employees must obtain special authorization to travel outside the capital, including the Lake Chad Basin.



866-340-8569

info@wwfocus.com

www.focuspointintl.com



Colombia

Risk Level: **Moderate**

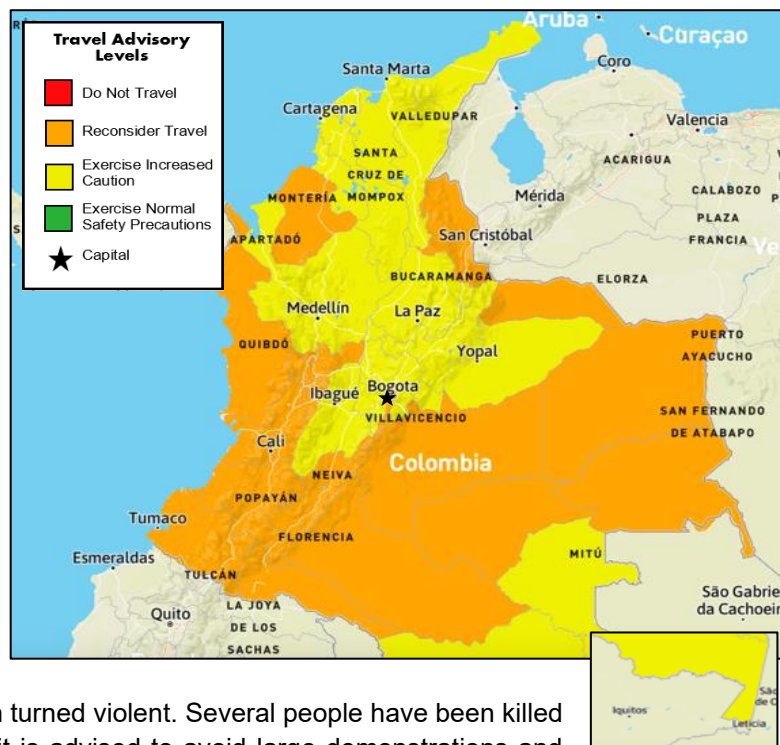
Country Overview:

In some parts of Colombia, the security situation is hazardous, with specific areas extremely unsafe. It is advised to reconsider travel to Colombia due to crime, civil unrest, and terrorism. There is a moderate risk to personal safety and security as the National Liberation Army (ELN) continues to plot attacks and violent and organized criminal activities, such as homicide, assault, armed robbery, extortion, and kidnapping. Travelers should be vigilant and pay close attention to warnings issued by the Colombian authorities.

Colombia has experienced an uptick in large-scale protests, which have, in recent months, often turned violent. Several people have been killed during these demonstrations, and it is advised to avoid large demonstrations and monitor local media for the latest information.

It is advised to avoid all travel to areas within 20km of the Venezuelan and Ecuadorian borders, except the Pan-American Highway crossing at Ipiales. It is also recommended to limit all but essential travel to the Arauca, Guaviare, Choco, the Ariari region of southern Meta, the South Pacific, Sanquianga and Telembi regions of Narino, the Western part of Cauca (except Popayan), Buenaventura, the Bajo Cauca and Uraba areas of Antioquia, the site of Southern-Bolivar, the region of Southern-Cordoba, the Catatumbo region of Norte de Santander, Peurto Caicedo, Valle del Guamuez, Orito, San Migue, Peurto Guzman, Peurto Asis and Peurto Leguizamo in Putumayo, Peurto Carreno in Vichada, Cartagena del Chaira, San Vicente del Caguan, El Doncello, Peurto Rico, Paujil and La Montanita in Caqueta due to crime and terrorism.

The US government cannot provide emergency services to US citizens as US government personnel cannot travel to these areas because of security restrictions and limited domestic travel options.





Congo (Republic of)

Risk Level: **Moderate**

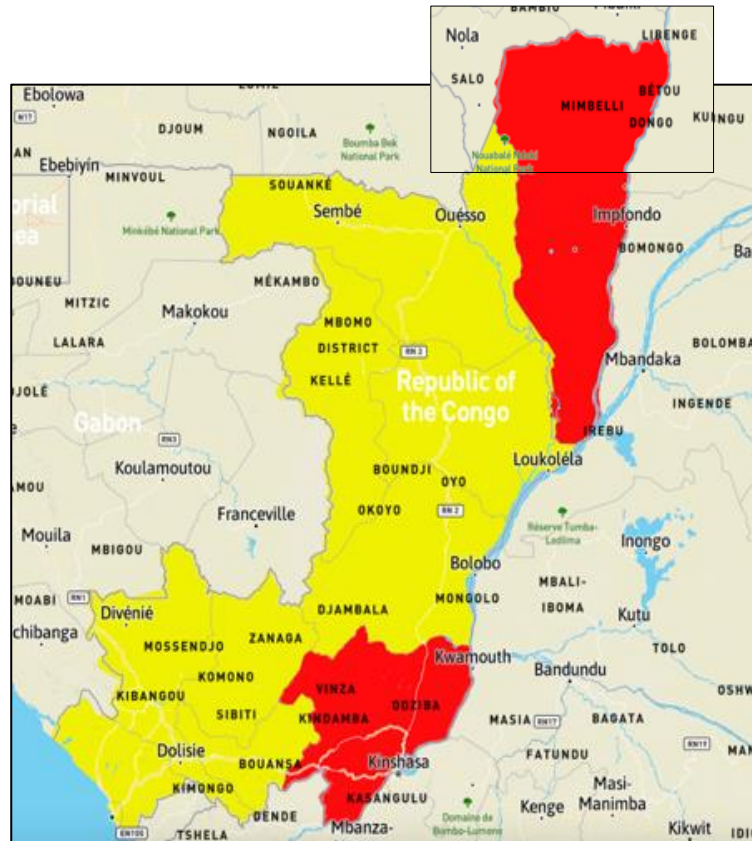
Country Overview:

The security situation in parts of the Congo is hazardous. Due to crime and civil unrest, it is advised to exercise increased caution in the country. There is a moderate risk to personal safety and security because violent crime, such as armed robbery and assault, is common. In addition, political demonstrations and armed clashes can be unpredictable.

The neighboring Democratic Republic of Congo (DRC) experiences sporadic but localized outbreaks of Ebola, cholera, and yellow fever. Travelers are advised to take precautions when traveling near border regions with the DRC.

It is advised to avoid all travel to the southern and western districts of the Pool region, including the Boko, Kindamba, Kinkala, Mayama, and Mindouli districts; the Mouyondzi district of Bouenza region; and within 50km of the border with the Central African Republic in Likouala region.

The US government has limited capacity to provide emergency assistance to citizens outside Brazzaville. The Pool region, historically a conflict zone between the government and the Ninja insurgent group, remains a potential risk despite a 2017 ceasefire. Violent clashes could resume without warning, particularly in the districts of Boko, Kindamba, Kinkala, Mayama, and Mindouli.



866-340-8569



info@wffocus.com



www.focuspointintl.com





Cuba

Risk Level: **Moderate**

Country Overview:

The security situation in Cuba is relatively stable and characterized by a strong military and police presence. Americans should exercise increased caution due to health attacks targeting numerous US Embassy employees. Other travelers' safety and security in Cuba may also be at risk. While there is no recent history of terrorism in Cuba, attacks cannot be ruled out. Tourists should be aware of the threat of



petty crime, and Cuba does, at times, experience violent crimes such as armed robbery, sexual assault, and homicide. Be cautious of your surroundings.

Avoid Hotel Nacional and Hotel Capri in Havana. If you experience any unusual acute auditory or sensory phenomena, move to another area immediately. Cuban authorities may carry out chemical fumigation measures across the island to control the spread of mosquito-borne diseases. The chemicals used may cause some discomfort if you encounter them.

Raul Castro retired and stepped down as the first secretary of the Communist Party of Cuba, transferring power to President Miguel Diaz-Canel. In the short term, little change is expected as Diaz-Canel is a staunch ally and supporter of the Castro family. The US has declared Cuba a state sponsor of terrorism and has imposed sanctions over human rights violations.

866-340-8569



info@wwfocus.com



www.focuspointintl.com





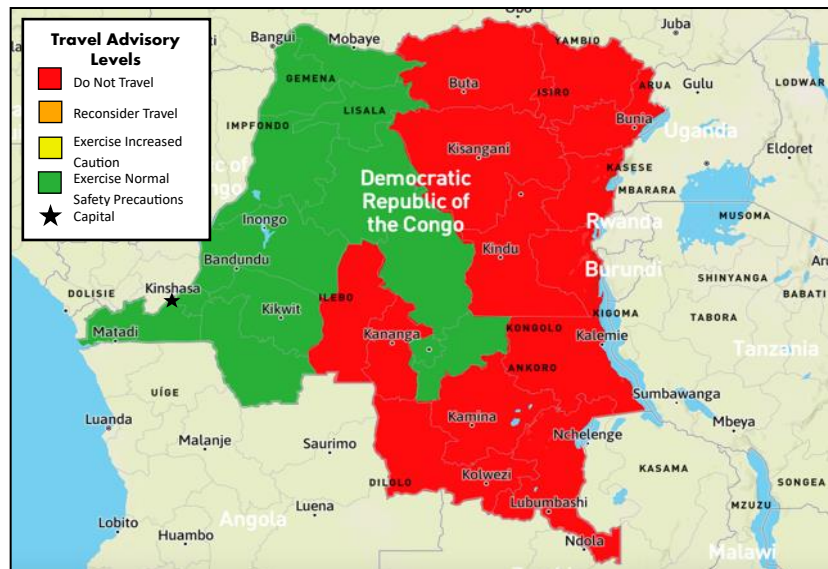
Democratic Republic of the Congo (DRC)

Risk Level: **Extreme**

Country Overview:

In some areas of the Democratic Republic of the Congo (DRC), the security situation is hazardous, with specific parts of the country extremely unsafe. It is advised to reconsider travel to the DRC due to civil unrest, terrorism, and crime.

There is a high risk to personal safety and security due to the activities of rebels and other armed groups, potential civil unrest, and outbreaks of violence, including killing, rape, kidnapping, and pillaging. Avoid overland travel in rural areas in eastern Congo. Contract a private security escort with local experience for business-critical trips.



The US Travel Advisory has issued a level 4 "do not travel" alert for specific regions in the Democratic Republic of Congo, including North Kivu Province, Ituri Province, the Eastern DRC Region, and the Three Kasai Provinces. Additionally, the advisory applies to all travel to or within 50km of the border with the Central African Republic. Traveling against this advice may invalidate your travel insurance.

A 'state of siege' was imposed for North Kivu and Ituri due to clashes in Goma. If you are in Goma, you should leave while commercial routes remain available. M23 have expressed their intent to occupy Goma. We advise against all travel to Goma. Fighting in Sake, 23km to the West of Goma, and the surrounding region has intensified and M23 are now in control of the town. The border crossings between Rwanda and the DRC at Gisenyi/Goma could close at short notice.

The Democratic Republic of Congo (DRC) experiences sporadic but localized outbreaks of Ebola, cholera, and yellow fever. Travelers are advised to avoid travel to outlying population centers. The DRC is experiencing an outbreak of mpox, formerly known as monkeypox. There have been at least 450 deaths so far, with the disease spreading to neighboring countries as well as reported cases outside of Africa. The World Health Organization has declared the outbreak to be a public health emergency of international concern.

It is recommended to avoid all travel to the provinces of Kasai, Kasai Central, Kasai Oriental, Sud-Kivu, Nord-Kivu, Maniema, Mai-Ndombe Tanganyika, and Ituri, as there have been sporadic and severe outbreaks of violence targeting civilians, including killing, rape, kidnapping, and pillaging. Limiting all but essential travel to the rest of the country is further advised.

866-340-8569



info@wwfocus.com



www.focuspointintl.com





Ecuador

Risk Level: **Moderate**

Country Overview:

Travelers in Ecuador are advised to exercise increased caution, particularly in areas with a hazardous security situation.

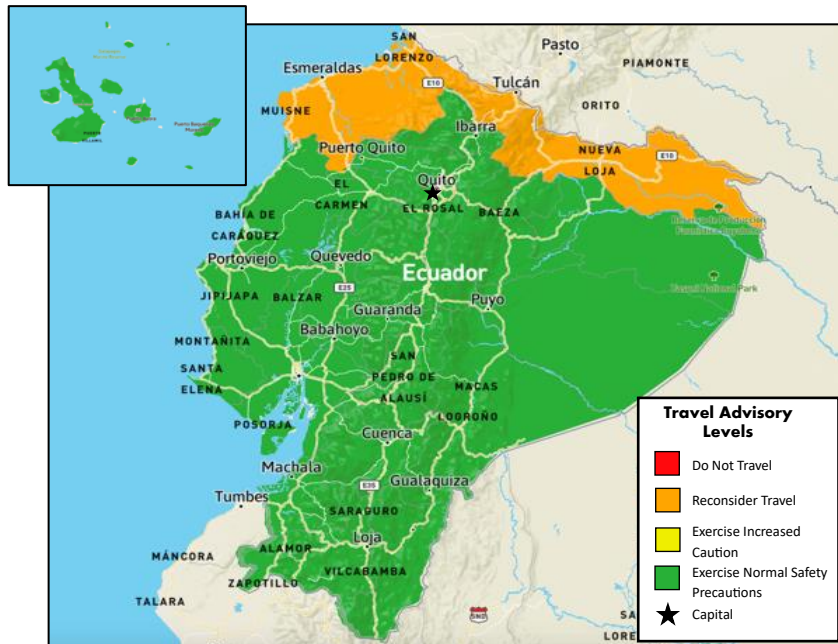
The northern border area with Colombia poses a heightened risk to personal safety due to a higher crime rate and incidences of kidnapping for ransom, rape/sexual assault, and drug-assisted robberies. Additionally, severe and sometimes violent demonstrations and road blockades can occur nationwide with little

warning. Being aware and cautious when traveling to or within Ecuador is crucial. Due to crime, it is advised to avoid travel to Sucumbíos and the northern part of Esmeraldas provinces, including Esmeraldas City and Guayaquil, south of Portete de Tarquí Avenue.

The public healthcare system in Ecuador provides free healthcare services to locals and foreigners; however, access to high-quality healthcare and specialized medical treatment may be limited outside of major cities. Travelers must ensure that their insurance includes coverage for evacuation by air ambulance. If you travel to the Galapagos Islands by boat, you may be required to provide information such as your blood group and emergency contacts when boarding.

On January 5, 2025, a 60-day State of Emergency (SOE) was issued due to internal unrest and armed violence. This resulted in a curfew from 10 p.m. to 5 a.m. in specific districts across Azuay, Cañar, Los Ríos, Guayas, Orellana, and Sucumbíos provinces. The security situation can change quickly in areas outside the 20km border zone, including Esmeraldas, Carchi, and Sucumbíos provinces. There are illegal armed groups and criminal gangs in these areas.

From January 18, 2024, travelers entering Ecuador via land or river borders from Peru or Colombia must provide a criminal record certificate from their country of residence for the past five years. However, exemptions include individuals with valid Ecuadorean visas, diplomatic passport holders, children under 18, victims of human trafficking, or those seeking international protection under Ecuador's Human Mobility Law. No restrictions apply to those entering Ecuador by air.





Egypt

Risk Level: **Moderate**

Country Overview:

In some parts of Egypt, security is hazardous, with specific country areas extremely unsafe. Travelers to Egypt should reconsider travel due to terrorism. There is a moderate risk to personal safety and security overall due to several extremist organizations operating in Egypt. It is advised to avoid traveling to the Governorate of North Sinai and 20km of the Egyptian and Libyan border because of the significant increase in criminal activity and continued terrorist attacks on police and security forces.



As a result of the unstable security situation in Sudan, many people

are reportedly trying to cross the border into Egypt. The two primary land border crossings between Egypt and Sudan are Qustul and Argeen. The town closest to these crossings in Sudan is Wadi Halfa, situated approximately 30km away from the border. However, there needs to be more infrastructure at these border crossings, resulting in extended wait times of several days for people attempting to cross. Travelers should know that access to food and water is very limited at these crossings.

It is advised to avoid all travel within 20km of the Egypt-Libya border, except for the town of El Salloum, where we advise against all but essential travel. It is also advised not to travel to the northern part of the South Sinai Governorate beyond the St Catherine-Nuweibaa road, except for the coastal areas along the west and east of the peninsula.

The safety situation at and near the Egypt-Gaza border remains volatile. Travelers near the Gaza border are advised to leave the area as soon as possible; otherwise, avoid the area.

Local law prohibits protesting or demonstrating without a permit. Being near anti-government protests can draw scrutiny from Egyptian police and security forces. US citizens have been detained for participating in demonstrations and posting content on social media perceived as critical of Egypt or its allies.

866-340-8569



info@wwfocus.com



www.focuspointintl.com



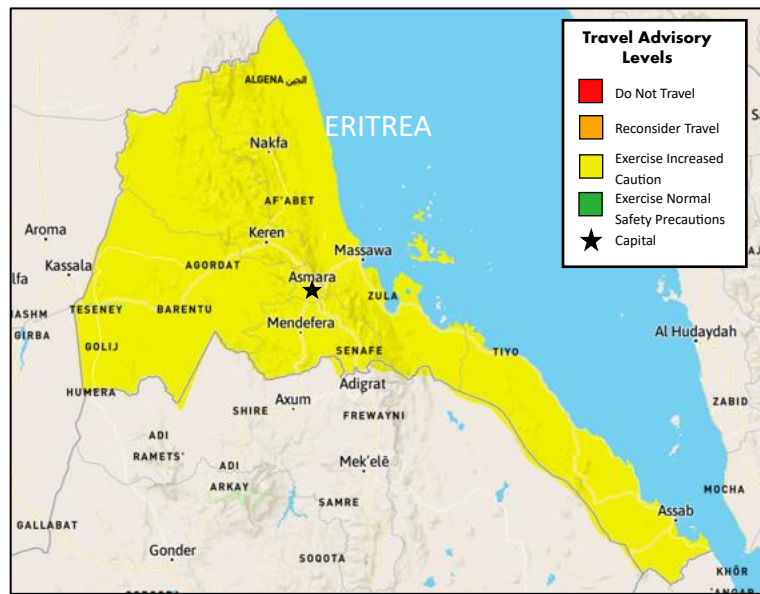


Eritrea

Risk Level: **Extreme**

Country Overview:

The security situation in some parts of Eritrea is hazardous. Due to travel restrictions, limited consular assistance, and political volatility, it is advised to exercise increased caution in Eritrea. There is a high risk to personal safety and security because of petty crimes like bandit attacks and pickpocketing, the ongoing instability with Ethiopia, and border disputes with Djibouti. Landmines can be found in many remote areas in Eritrea, particularly in Nakfa, AdiKeih, Arezza, the 40 km-wide regions between the Mereb and Setit Rivers, and in the region north and west of Keren, areas near Ghinda, Massawa, Barentu, Agordat, Dekemhare, and south of Tessenei.



Avoiding all travel within 25km of Eritrea's land borders is advised. All border crossings between Eritrea and Ethiopia are closed, and all foreign nationals, including diplomats, must apply for a travel permit well in advance to leave Asmara. Bearers of US passports are advised to avoid attempting land travel between the two countries.

In Eritrea, the US government cannot provide emergency services to US citizens because US government employees must obtain special clearance to travel outside Asmara. Eritrean law enforcement officials regularly block access to foreign nationals in detention. Therefore, the US Embassy may not receive notification or be allowed access if you are detained or arrested.

866-340-8569



info@wwfocus.com



www.focuspointintl.com



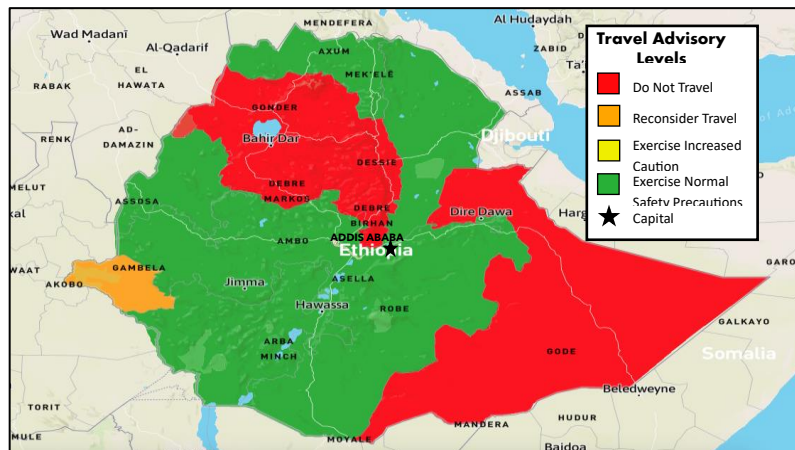


Ethiopia

Risk Level: **High**

Country Overview:

The security climate in some parts of Ethiopia is complex, with some highly unsafe regions. Due to armed conflict, communications disruptions, civil unrest, crime, terrorism, extreme risk, and uncertainty, it is advised to reconsider travel to Ethiopia. There is a risk of widespread protests in response to political and religious unrest. Demonstrations may occur at short notice and result in enormous gatherings, leading to travel disruptions and road closures. You should use caution and avoid crowds, especially near places of worship.



Though the military conflict in Tigray subsided after the Ethiopian Government and Tigray People's Liberation Front signed a peace agreement in 2022, a state of emergency was imposed in August 2023 after conflict started between Amhara militia groups (Fano) and the Ethiopian National Defence Force.

It is advised to avoid all travel within 10km of the border of Eritrea, South Sudan, and Kenya and 20km of the border with Sudan. It is also advised to avoid travel to the whole of the Tigray regional state, the whole of Gambella provincial state, the West Wollega Zone, East Wollega Zone, Kellem Wellega and Horo Gudru Wellega in the Oromia regional state, the total of Metekel Zone and Maokomo Special zone in the Benishangul Gumuz provincial state, north of the A4 road in West Shewa Zone, south and west of the A3 in North Shewa Zone in the Oromia regional state, and within 100km of the border with Tigray provincial state to the north of Anseba town in Afar, and within 30km of the border with Tigray to the south of Anseba town in Afar.

The Ethiopian government frequently restricts or shuts down internet, cellular data, and phone services during and after civil unrest, limiting access to US Embassy consular services. The US Embassy cannot provide emergency assistance to citizens outside Addis Ababa.

There is an ongoing threat of terrorism across Ethiopia. Westerners, including British nationals, may be targeted, with attacks potentially occurring at religious events, public holidays, or other gatherings. These attacks can be indiscriminate and may affect areas frequented by foreign nationals.

Air travelers are limited to 3,000 Ethiopian Birrs when entering or leaving Ethiopia. Carrying more than the limit can result in a seizure as well as a prison sentence. Cash over 500 USD must be declared when crossing a land border. Keep your receipt if you change currency into Birr; otherwise, you may be unable to exchange leftover money.

866-340-8569



info@wwfocus.com



www.focuspointintl.com



If you are traveling from a country with confirmed cases or a country named by the Ethiopian Civil Aviation Authority, you may be asked to complete a Travellers Health Screening form for Mpox. If you have symptoms, you could be required to undergo testing or treatment.



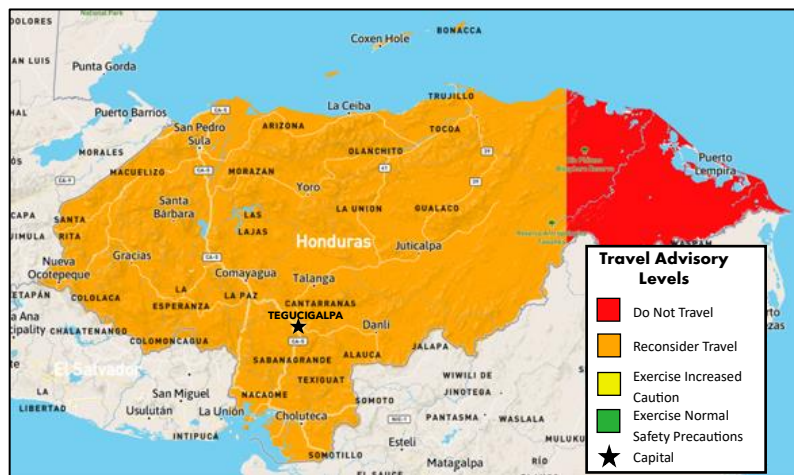
Honduras

Risk Level: **Extreme**

Country Overview:

The security situation in Honduras is hazardous, with a specific part of the country being extremely unsafe. It is advised that travel to Honduras be reconsidered due to crime. There is a heightened risk to personal safety and security because of violent crimes like homicide and armed robbery.

There has been a sharp increase in cases of dengue fever in Honduras, particularly in the departments of Cortés, Yoro, Olancho, and Santa Bárbara. Travelers should monitor local media for updates.



Gracias a Dios is an isolated region with high criminal activity and drug trafficking levels. Infrastructure is weak, government services are limited, and police and military presence is scarce. It is advised to avoid all travel to Gracias a Dios Department and limit all travel to the rest of the country unless it's essential.

As of October 22, travelers need a visa to travel to Honduras. However, if you are a cruise ship passenger, you can enter Honduras with a "short pass." This pass permits you to disembark while the ship is docked in Honduras (usually for less than a day). You will need a visa to stay in Honduras beyond the docking hours.

Upon arrival, you will receive a 30-day visit entry stamp in your passport. It's essential to ensure that the border control officer stamps your passport, as failing to do so may result in a fine. If your passport is not stamped, please return to the immigration desk or visit the National Institute of Migration in Tegucigalpa as soon as possible. If you wish to extend your stay, you can apply at an immigration office.

866-340-8569



info@wwfocus.com



www.focuspointintl.com





India

Risk Level: **Moderate**

Country Overview:

The security situation in some parts of India is hazardous, with specific areas of the country being extremely unsafe. It is advised to exercise increased caution in India due to crime and terrorism. There is an overall moderate risk to personal safety and security because of terrorist and insurgent activity, civil unrest, the potential for armed conflict, and violent crime, such as sexual assault.

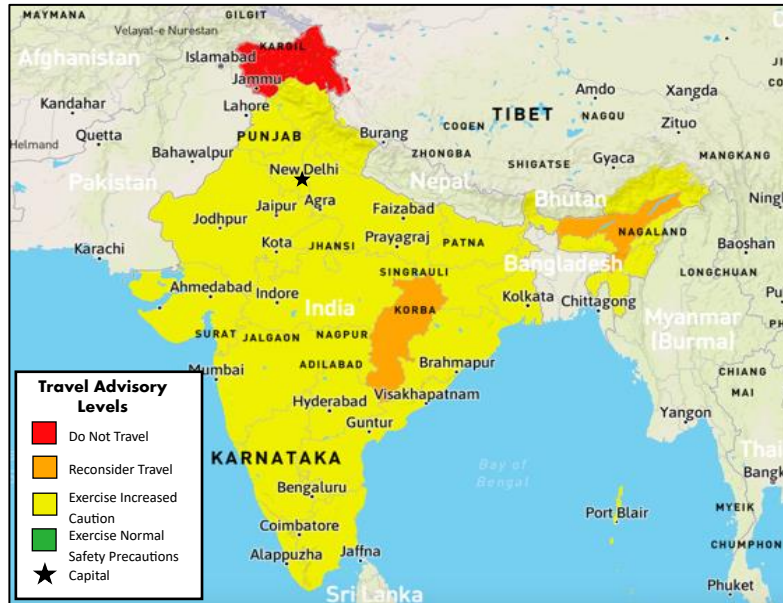
Since the Indian Government's constitutional change that altered Jammu and Kashmir's internal political status, the region has

seen regular protest action and political violence. An increased security presence is in place due to frequent terrorist attacks in the area.

The country is experiencing heightened religious tensions between Hindus and Muslims. The rising Hindu nationalism within the ruling BJP party has seen frequent incidents of anti-Muslim hate crimes that authorities have ignored or downplayed. The country was heavily criticized when a BJP spokesperson made derogatory remarks about Islam from Muslim countries. Tensions are likely to lead to an increase in violent incidents. Travelers should avoid large gatherings and protests and speak about religious matters while traveling in India.

Ethnic clashes occur frequently, leading to authorities implementing restrictions, including imposing curfews in various parts of affected states. Transportation and internet access are often disrupted or suspended. Travelers are advised to avoid protests, strikes, and demonstrations as they may turn violent.

It is advised to avoid all travel to Jammu and Kashmir (except the Ladakh region) and the India- Pakistan border (except the Atari crossing). Limiting all but essential trips to the Northeastern states (Assam, except Guwahati, Nagaland, and Manipur), Chhattisgarh, and neighboring states' border areas is also advised.



866-340-8569



info@wwfocus.com



www.focuspointintl.com





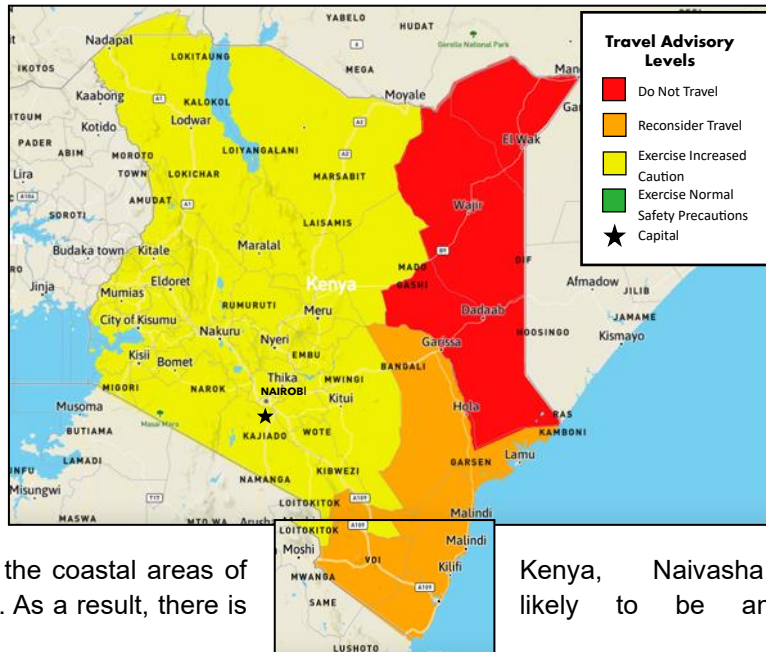
Kenya

Risk Level: **Moderate**

Country Overview:

In some areas of Kenya, the security situation is hazardous, with specific parts of the country being extremely unsafe. It is advised to exercise increased caution in Kenya due to terrorism, health issues, and crime. There is an overall moderate risk to personal safety and security because of terrorist attacks and violent crimes, such as armed carjacking, mugging, home invasion, and kidnapping.

The US State Department has warned that credible information indicates that extremists in Nairobi, the coastal areas of and Nanyuki may target Westerners. As a result, there is an increase in visible security services.



Kenya, Naivasha, likely to be an

Cholera cases have also been detected in Narok, Kajiado, Garissa, and Machakos counties. Travelers are advised to monitor the latest updates from the World Health Organization.

Travelers should know that the political opposition has arranged anti-government demonstrations in recent months that could resume without prior notice. Recent protests turned violent, with protestors clashing with police, resulting in deaths and injuries. Significant protests have been against the draft Finance Bill 2024 across multiple cities in Kenya, including Nairobi. Travelers are advised to avoid large gatherings and monitor local media for updates.

As of November 4, 2024, travelers are advised to reconsider travel: within 60 km of the Kenya-Somalia border, Eastern Garissa County (up to 20 km northwest of the A3 road) including Boni National Reserve, Mandera County (excluding Mandera West sub-county), Lamu County (excluding Lamu Island and Manda Island), Tana River County north of the Tana River (up to 20 km northwest of the A3 road) and within 15 km of the east coast between the Tana River and Galana River.

866-340-8569



info@wwfocus.com



www.focuspointintl.com





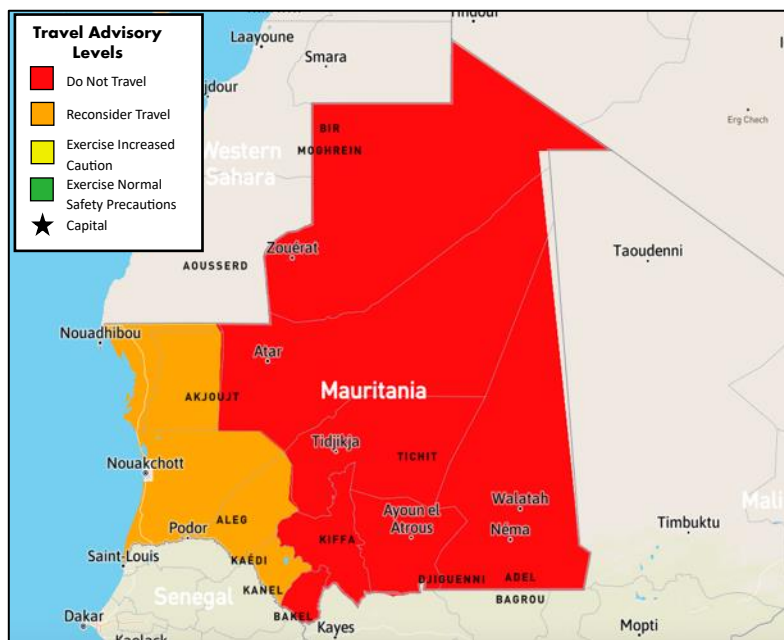
Mauritania

Risk Level: **Moderate**

Country Overview:

The security situation in Mauritania is highly dangerous, and specific parts of the country are extremely unsafe. It is advised that you reconsider traveling to Mauritania due to crime and terrorism. There is a high risk to personal safety and security because of activities by terrorist groups and violent crimes, such as mugging, armed robbery, kidnapping, rape, and assault.

It is advised to avoid all travel to parts of Tagant, Adrar, Gorgol, Dakhlet Nouadhibou, and within 25km of the Malian border and defer all but essential travel to within 25km of the Western Sahara border.



The Government of Mauritania designates certain areas off-limits to foreigners and most Mauritians. These "No Movement Zones" are hazardous due to their proximity to Mali, where armed groups engaged in an active insurgency carry out cross-border attacks into Mauritania.

Demonstrations can happen at any time in Nouakchott. Travelers should avoid political gatherings and demonstrations and follow the advice of local authorities and security forces. Travelers should also maintain adequate stocks of non-perishable food and water.

The US government cannot provide emergency services to US citizens in Mauritania as US government employees must obtain special authorization to travel outside Nouakchott.

866-340-8569



info@wwfocus.com



www.focuspointintl.com





Mexico

Risk Level: **Moderate**

Country Overview:

The security situation in some parts of Mexico is hazardous, with specific areas of the country being extremely unsafe. Travelers to Mexico should exercise increased caution due to crime. There is a high risk to personal safety and security in certain areas because of widespread violent crime, such as homicide, kidnapping, carjacking, and robbery.



It is advised to avoid all travel to Colima State, Guerrero State, Michoacán State, Sinaloa State, Tamaulipas State, and Zacatecas State. Limit all but essential trips to Baja California, Guanajuato, Chihuahua, Coahuila, Durango, Jalisco, Morelos, Nayarit, Nuevo Leon State, San Luis Potosi State, Sonora State, Zacatecas State, and travel on Federal Highway 199 (Carretera Federal 199) between Rancho Nuevo (just outside San Cristobal de las Casas) and Palenque. Violent crimes are widespread, and armed criminal groups have targeted and robbed commercial vessels, oil platforms, and offshore supply vessels in the Bay of Campeche. It is advised to limit all but essential travel within 40 km (25 miles) of the Guatemalan border up to and including the border crossing at Gracias a Dio.

Protest action occurs frequently in major cities, and travelers should avoid all demonstrations and exercise increased caution when in proximity to large gatherings. Follow the advice of local authorities. Incidents of gang violence have occurred in popular tourist destinations such as Cancun and surrounding areas. Travelers are advised to maintain a high level of situational awareness.

Mexico's hurricane season runs from June to November. During tropical storms and hurricanes, flooding and landslides may occur hundreds of miles from the storm's center and even after the storm's passing.

866-340-8569



info@wwfocus.com



www.focuspointintl.com





Niger

Risk Level: **Extreme**

Country Overview:

The security situation in Niger is hazardous, with large parts of the country being extremely unsafe. It is advised to reconsider travel to Niger due to crime and terrorism. There is a high risk to personal safety and security because of terrorist attacks, kidnapping threats, and violent crimes, such as armed robbery.

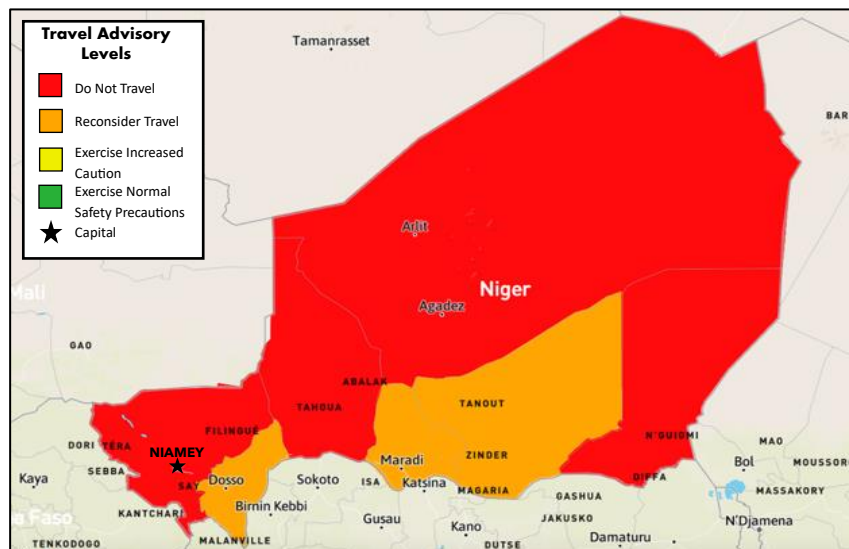
On July 26, 2023, the military staged a coup in Niamey. General

Abdourahmane Tchiani declared himself the new leader of Niger. There is a heightened military presence near government buildings, including at the Presidential Palace on Boulevard de la République. Land and air borders remain closed. The situation remains volatile and could escalate without warning. Tensions are escalating between Niger's new military regime and the West African regional bloc ECOWAS. Travelers are advised to avoid all travel to Niger.

It is advised not to travel at all to the following parts of Niger: all areas of the country north of the city of Abalak, the province of Agadez, Tahoua province, Tillabéri province north of Niamey; areas within 40km of the border with Nigeria in Diffa, Zinder, and Maradi provinces; and the Parc du W, plus the contiguous Dosso and Tamou hunting zones. It is further advised to limit all but essential travel to the rest of Niger, including the capital city Niamey.

It is advised to avoid crossing the River Niger on foot at any time. Although the Nigerien airspace has reopened, disruptions to commercial flights from Niamey's Diori International Airport can occur at short notice. If there is serious violence, unrest, or a deterioration in the security situation, it could be difficult to leave safely.

The US government cannot provide emergency services to US citizens in remote and rural areas as US government employees must obtain special authorization to travel outside of the capital.



866-340-8569



info@wwfocus.com



www.focuspointintl.com





Nigeria

Risk Level: **Extreme**

Country Overview:

The security situation in Nigeria is hazardous, and specific parts of the country are incredibly unsafe. It is advised to reconsider travel to Nigeria due to crime, terrorism, and piracy. There is a high risk to personal safety and security because of the threat posed by extremist organizations, kidnappings, and violent crimes, such as armed robbery, assault, carjacking, and rape.

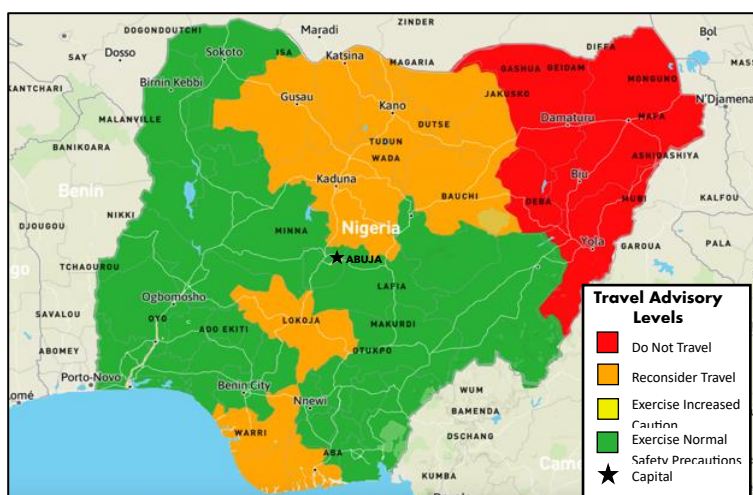
The risk of kidnappings in Nigeria, particularly in the northern and Middle Belt states, remains high. Gangs and unidentified individuals have carried out most of these attacks, but Boko Haram militants were behind some of them in northeast Nigeria. Even though the kidnappings often end without bloodshed once a ransom is paid, these attacks can result in injuries and fatalities. Criminal groups usually fire indiscriminately at vehicles to stop them. Reconsider overland travel across the country until further notice due to an ongoing spike in kidnapping-for-ransom and bandit attacks.

Militant groups launched attacks targeting oil and gas infrastructure in the Niger Delta region, with the area's risk of robbery, criminality, and kidnapping remaining high.

The country experiences sporadic but widespread public demonstrations, notably in major urban centers such as in the capital of Abuja. These events have led to significant disruptions, reports of violence, and the deployment of tear gas by security forces in various locations. Travelers should continue to exercise caution, avoid traveling after dark, steer clear of large crowds, and stay updated through local media.

It is advised to avoid travel to Borno State, Kaduna State, Katsina State, Zamfara State, Yobe State, Adamawa State, Gombe State, the riverine areas of Delta, Bayelsa, Rivers, Akwa Ibom, and the Cross River States; and within 20km of the border with Niger in Zamfara State. It is also advised to limit all but essential travel to Bauchi State; Kano State; Jigawa State; Sokoto State; Abia State; Plateau State; Taraba State; Kogi State; Imo State; within 20km of the border with Niger in Sokoto and Kebbi States; non-riverine areas of Delta, Bayelsa and Rivers States.

Importing beer, mineral water, soft drinks, sparkling wine, fruits, vegetables, cereals, eggs, textile fabrics, jewelry, and precious metals is illegal. Exporting African art, particularly antiques, is also illegal without written authorization from the Department of Antiquities.



866-340-8569



info@wwfocus.com



www.focuspointintl.com



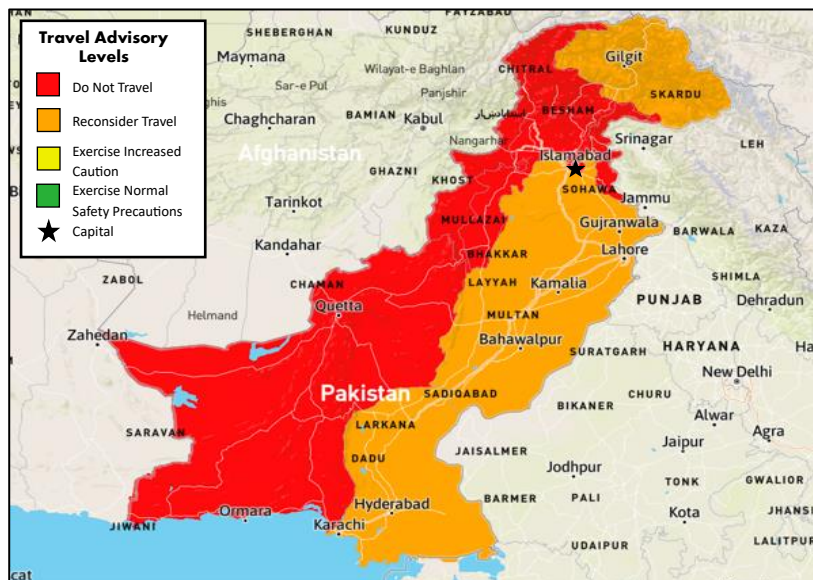


Pakistan

Risk Level: **Extreme**

Country Overview:

The security situation in Pakistan is hazardous, and a significant part of the country is exceptionally unsafe. It is advised to reconsider travel to Pakistan due to terrorism. There is a high risk to personal safety and security due to terrorist attacks. Political demonstrations often become violent. Travelers should continue to exercise caution, monitor news reports, and follow the advice of local authorities.



The US Bureau of Consular Affairs advises against travel to

specific areas, including within 10 miles of the Pakistan-Afghanistan border, 10 miles of the Line of Control, most regions of Khyber Pakhtunkhwa Province, and all of Balochistan Province. Tensions are heightened amid regional conflicts, such as Israel's actions in Gaza.

Terrorist groups continue organizing attacks in Pakistan. Attacks on civilians, local military, and police targets are commonplace. Following the death of Al Qaeda leader Ayman al-Zawahiri in a US drone attack in Afghanistan, foreign nationals in Pakistan should be extra vigilant. Terrorists may retaliate and attack with little or no warning, targeting transportation hubs, markets, shopping malls, military installations, airports, universities, tourist locations, schools, hospitals, places of worship, and government facilities. Terrorists have targeted US diplomats and diplomatic facilities in the past.

Crime is high, particularly on public transport and in crowded areas. Be cautious when moving around urban areas at night, especially on foot. Criminals, including kidnappers, have targeted foreigners. There is an active black market for forged and stolen passports, along with credit card fraud and similar scams. Travelers are advised to take safety precautions, keep a low profile, and choose accommodation carefully.

Due to the security environment, the US government is restricted from providing emergency services to US citizens in Pakistan.

866-340-8569



info@wwfocus.com



www.focuspointintl.com





Panama

Risk Level: **Moderate**

Country Overview:

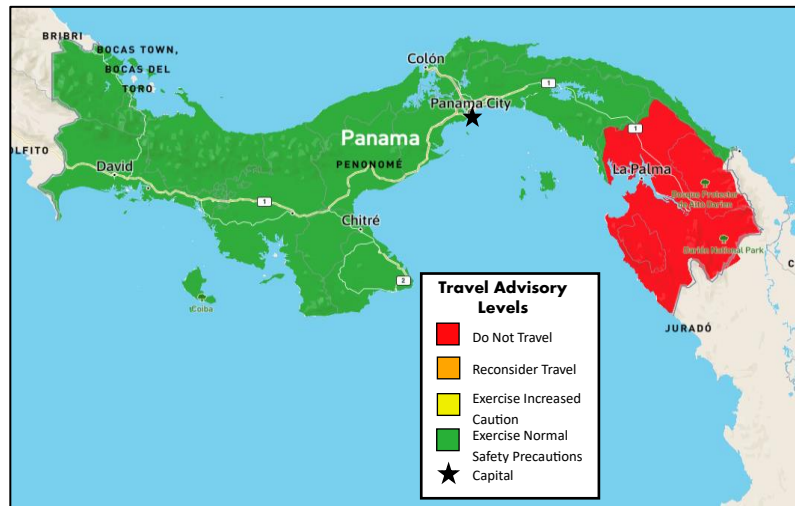
The security situation in Panama is relatively safe. Still, a specific region within the country has an extreme risk due to the presence of criminal elements and the operation of drug and human trafficking networks. Moreover, emergency response and consular assistance are limited in some areas. Overall, travelers should exercise standard precautions in Panama.

It is advised to avoid all travel to parts of the Darién Region,

Mosquito Gulf, 10 miles of the coastline from Boca de Rio, Chiriqui to Cocolé del Norte, all areas south of Jaque to Manenito to Yaviza to Lajas Blancas cities to the Colombian border, the city of Lajas Blancas and the city of El Salto. If you plan to travel to Darien province, you are advised to do so only with an organized group and to destinations under the surveillance of the Panamanian police.

There may be demonstrations to protest internal Panamanian issues or, more rarely, manifestations of anti-American sentiment. While most demonstrations are non-violent, the Panamanian National Police have used tear gas and riot control munitions in response to protests, mainly when roadways are blocked, or aggression is used against the police. Panama City, Colon, and Chiriqui provinces have the highest crime rates. Common crimes include shootings, home invasions, sexual assault, armed robberies, muggings, and thefts.

The US government's ability to provide emergency services to US citizens in this region is limited. US government personnel must obtain prior approval before traveling there and face additional restrictions.



866-340-8569

info@wwfocus.com

www.focuspointintl.com



Papua New Guinea

Risk Level: **Extreme**

Country Overview:

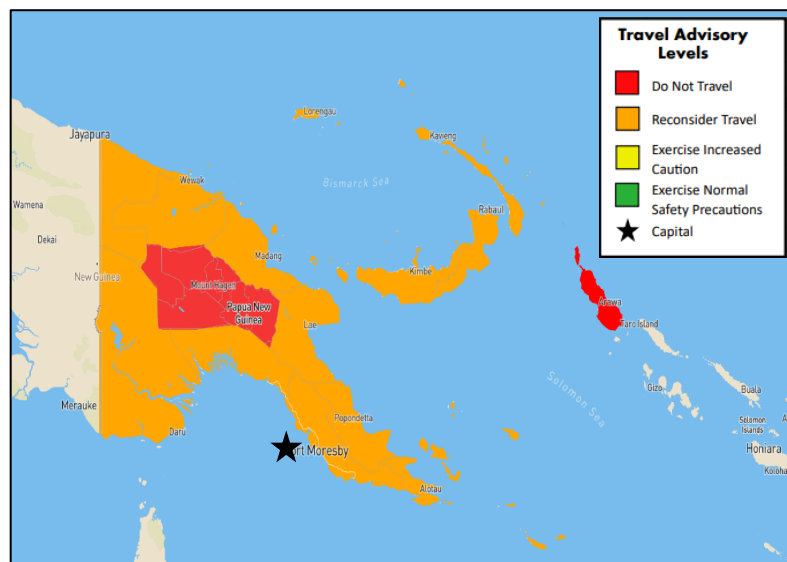
The security situation in Papua New Guinea is high risk, primarily due to crime and civil unrest. Travelers are strongly advised to reconsider their plans. Exercise increased caution due to the potential threat of unexploded ordinance (UXO) and volcanic activity. Seasonal natural disasters, such as tropical cyclones and flash flooding, are common in Papua New Guinea. Stay vigilant and keep an eye on recent weather reports.

Law and order are poor or very poor in many parts of the country.

Though the risk of severe armed conflict or terrorist activity is low, crime is a serious concern in major cities, and parts of the country are unstable. Common violent crimes include sexual assault, carjackings, home invasions, and armed robberies. Outside of the capital of Port Moresby, police presence is limited, and officers may be unable to assist due to limited resources. Pay close attention to your safety, especially after dark, and watch local media for potential new security threats.

There is a high risk of tribal fighting in Hela and Southern Highlands provinces. Tensions between communal or tribal groups can erupt anytime and without warning and quickly escalate. Travelers are advised to avoid the Highlands provinces and monitor local media for updates.

Due to civil unrest, avoiding all travel to the Highlands region, Southern Bougainville, particularly areas near the Panguna mine, is advised. Reconsider traveling to Rabaul in East New Britain Province, Kimbe in West New Britain Province, and Manam Island in Madang Province due to the high seismic and volcanic activity risk. There is still WWII unexploded ordinance, and travelers should exercise increased caution when traveling in remote areas, particularly along the Kokoda trail and at Milne Bay and Rabaul.



866-340-8569



info@wwfocus.com



www.focuspointintl.com





Philippines

Risk Level: **Moderate**

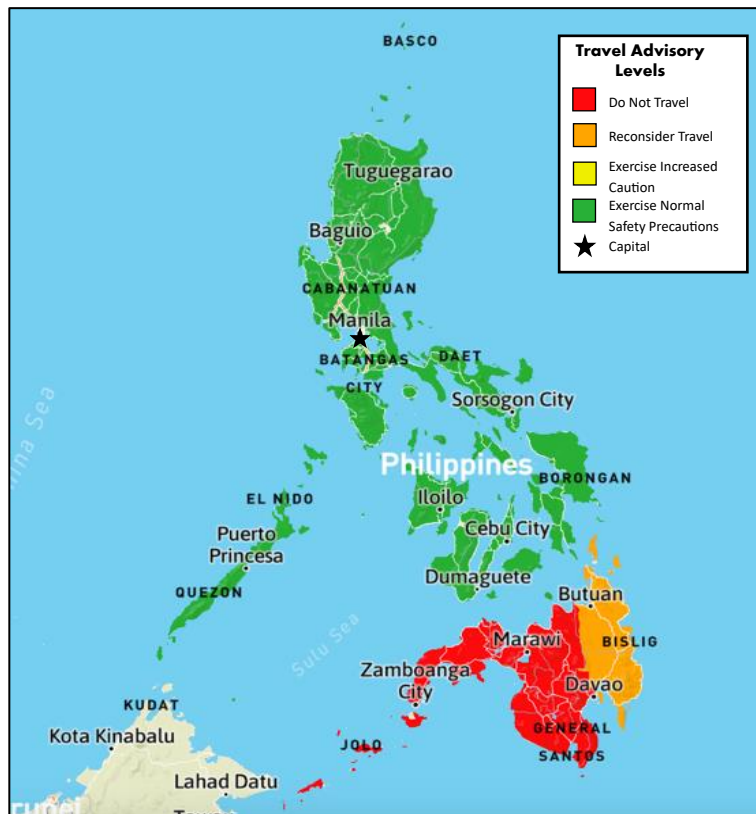
Country Overview:

In some parts of the Philippines, the security situation is hazardous, with specific areas extremely unsafe. It is advised to exercise increased caution throughout the country due to crime, terrorism, and civil unrest. There is a high risk to personal safety and security because of occasional kidnappings, bombings, and widespread criminal activity, such as con games, pickpocketing, internet scams, and credit/ATM card fraud. Travelers should keep up to date with local information and avoid any demonstrations. The Philippines has seen a resurgence in the Poliovirus nationwide, and travelers are advised to consult their doctor before traveling. There have also been numerous cases of Dengue fever, which has now exceeded the epidemic threshold.

It is advised to avoid all travel to western and central Mindanao and the Sulu Archipelago (including the southern Sulu Sea) because of terrorist activity and clashes between the military and insurgent groups. Limit all travel unless it is crucial to the remainder of Mindanao (excluding Siargao Islands, Dinagat, and Camiguin) and the south of Cebu province, including the municipalities of Badian and Dalaguete and the surrounding areas leading to Badian and Dalaguete, due to the threat of terrorism.

Terrorist and armed groups continue to organize plans for bombings, possible kidnappings, and other offensive maneuvers in the Philippines. Armed groups and terrorists may attack with little warning, targeting shopping malls, markets, tourist locations, and local government facilities.

Travelers are advised to be vigilant of the numerous volcanoes in the Philippines, which can erupt without warning. Sudden steam and ash explosions may happen at any time. On June 3, authorities raised the alert level of Kanlaon Volcano in Negros Island to level 2 (increasing unrest) following an explosive eruption. Check with your airline for any disruption to flights. Check news reports and follow local advice before traveling to any areas around volcanoes. Avoid volcanic areas during and immediately after heavy rainfall when there's an increased risk of lava flows.



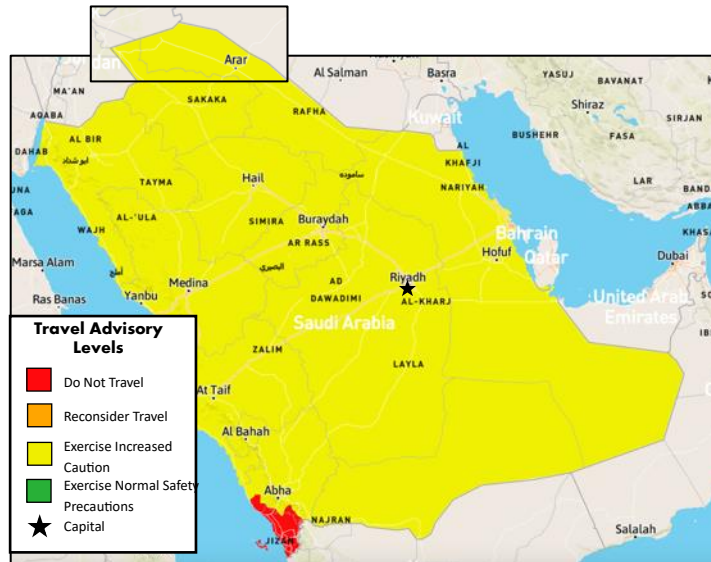


Saudi Arabia

Risk Level: **Moderate**

Country Overview:

In some parts of Saudi Arabia, the security situation is hazardous, with specific areas extremely unsafe. It is advised to exercise increased caution in Saudi Arabia due to terrorism and armed conflict. There is a moderate risk to personal safety and security overall because terrorist groups continue plotting possible attacks in the country. Rebel groups operating in Yemen have launched missiles, drones, and IEDs into Saudi Arabia, targeting populated areas and critical national infrastructure.



Avoiding all travel within 50 miles of the Saudi-Yemen border is advised. This includes the cities of Jizan, Najran, and Qatif in the Eastern province and its suburbs, including Awamiyah. Abha International Airport also falls in this avoid advisory.

Regional forces hostile to Saudi Arabia have conducted destructive and sometimes lethal attacks against various targets, including critical infrastructure, airports, military facilities, and energy facilities throughout the country, and targeting vessels in Red Sea shipping lanes. The civilian airport in Abha, areas close to Jeddah, Riyadh, and Yanbu, military deployments in the south, and specific oil and gas establishments are all examples of recent targeted attacks. The Islamic Republic of Iran (IRI) has supplied Yemen-based Houthis and other regional proxy groups with weapons, including missiles, rockets, and drones. Houthi militants continue to organize and conduct attacks against locations in Saudi Arabia. Violence associated with Iran-supported groups represents a significant threat. US citizens living and working near military bases and critical civilian infrastructure, particularly near the border with Yemen and the Eastern Province, are at heightened risk of missile and drone attacks.

Travelers entering Mecca without a valid Hajj permit between May 23 and June 21 could receive a significant fine, deportation, and a ban from re-entering Saudi Arabia. The Hajj visa is for a set time and is not extendable.

866-340-8569



info@wwfocus.com



www.focuspointintl.com





Tunisia

Risk Level: **Moderate**

Country Overview:

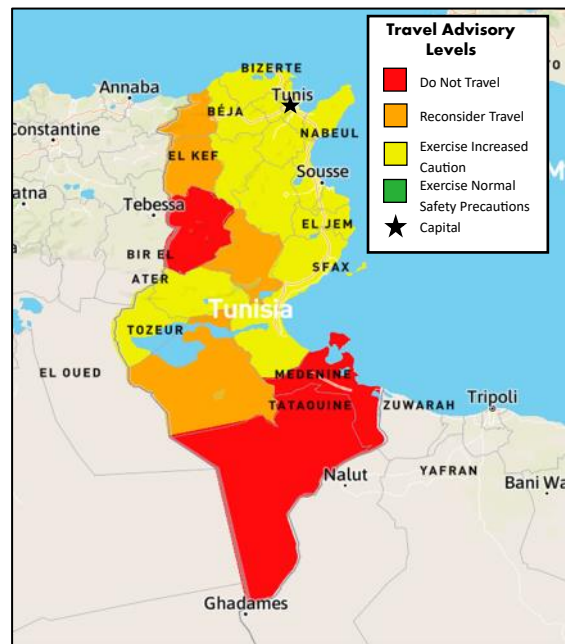
In some parts of Tunisia, the security situation is hazardous, with specific areas extremely unsafe. It is advised to exercise increased caution in Tunisia due to terrorism. Terrorist groups active in the country pose a significant threat to travelers in the region. A state of emergency has been in effect since November 24, 2015. The state of emergency has been extended numerous times, with the most recent extension extending it to December 31, 2024.

On July 26, 2022, President Saied was declared the victor in a constitutional referendum he had called for to solidify his hold on power. The victory allowed him to appoint judges and government ministers and introduce laws.

Tunisia is scheduled to hold elections this year, with President Saied's term due to end in October. Under his rule, Tunisia has seen attacks on both the judiciary and journalists, stoking fears of democratic backsliding and rising authoritarianism. President Saied has also overseen a poor-performing economy, which could impact the coming election.

It is advised to avoid all travel to the Mount Chaambi National Park area, including the town of Kasserine and areas along the Libyan border, including the city of Ben Guerdane and the immediate surrounding area, and the militarized zone south of the towns of El Borma and Dhehiba. It is also advised to limit all but essential travel to areas south of, including the towns of Nefta, Douz, Medenine, and Zaris and the Governorates of Le Kef, Jendouba, and Sidi Bou Zid.

The US government has limited ability to provide emergency services to US citizens in some areas of Tunisia.



866-340-8569



info@wwfocus.com



www.focuspointintl.com





Turkey

Risk Level: **Moderate**

Country Overview:

The security situation in some parts of Turkey is hazardous, with specific areas considered highly unsafe. It is advised to reconsider travel to Turkey due to terrorism and arbitrary detentions.

There is a high risk to personal safety and security because terrorist groups continue to plot attacks in Turkey. Government security officials have detained individuals who appear primarily politically motivated on scant or secret grounds. Most episodes have occurred in southeast regions of the country, such as Ankara and Istanbul.

The war in Gaza has increased regional tensions, leading to ongoing demonstrations in various parts of Turkey. Significant protests have occurred outside diplomatic facilities related to the conflict, particularly Israeli diplomatic missions in major cities such as Ankara and Istanbul. Travelers are recommended to avoid demonstrations as they can deteriorate into violence.

Since the beginning of 2023, there has been a surge in gastrointestinal infections, with over 200 cases of Salmonella detected from travelers returning from Turkey. To protect themselves from potential diseases, travelers should take precautions with food and water.

It is advised to avoid all travel within 10km of the border of Syria, the city of Diyarbakir, Sirnak province, and Hakkari province.



866-340-8569



info@wwfocus.com



www.focuspointintl.com

